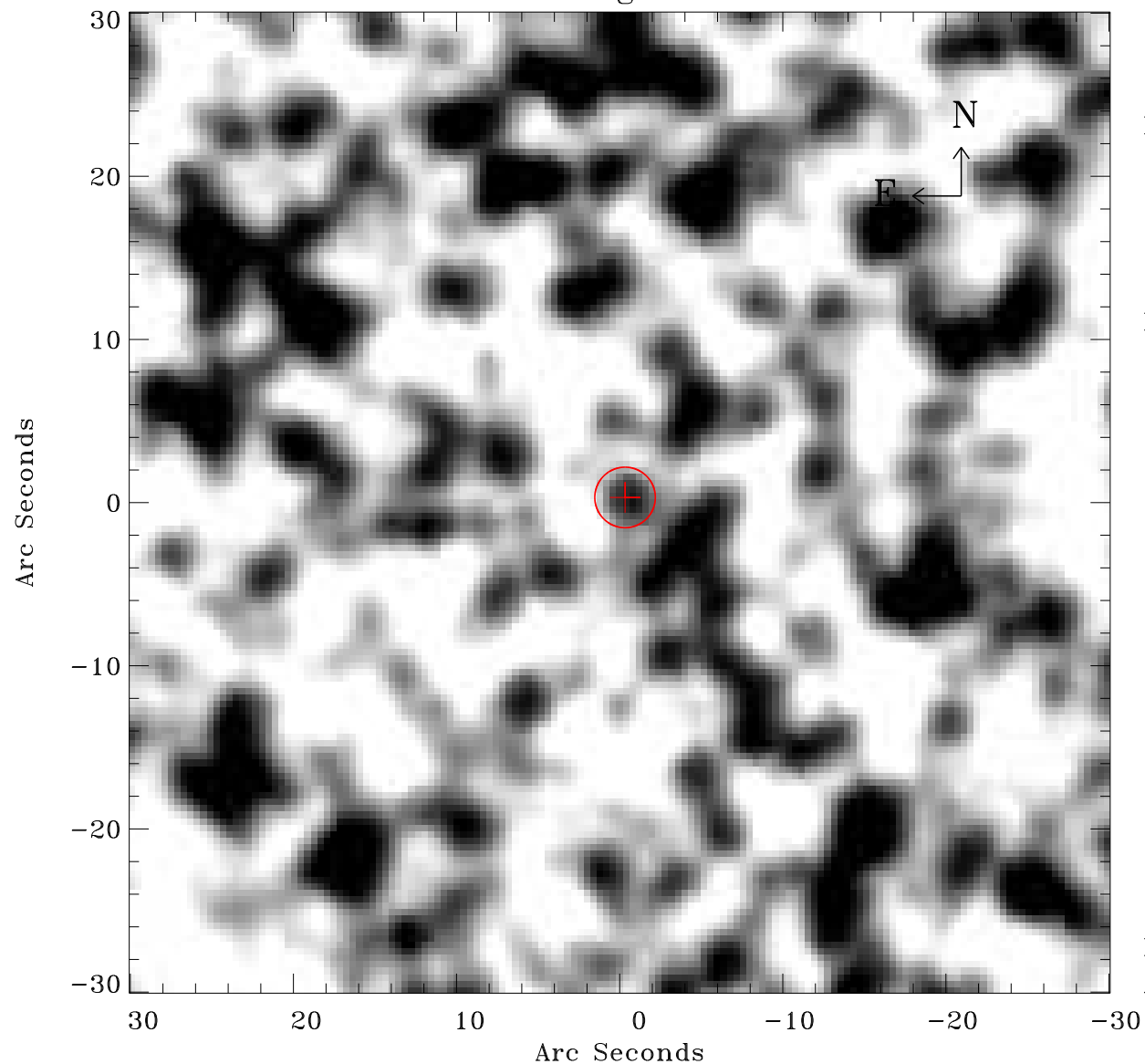


EPIC source finding chart ACDS V10.0



Principal Investigator :

Dr Frank Haberl

XMM target name :

LMC survey 66

OBS ID : 690751601

Source number : 15

X-ray coordinates :

α : 05 39 22.03

δ : -70 33 11.5

Center coordinates :

α : 05 39 22.02

δ : -70 33 11.4

Plate reference :

Origin : CDS HIPs Network

Plate : MAMA srcj

Pixel : 0.40 "/pix

Error circle :

R_{90} (") : 1.8

XMM SSC

Apr 21 14:26:40 2019