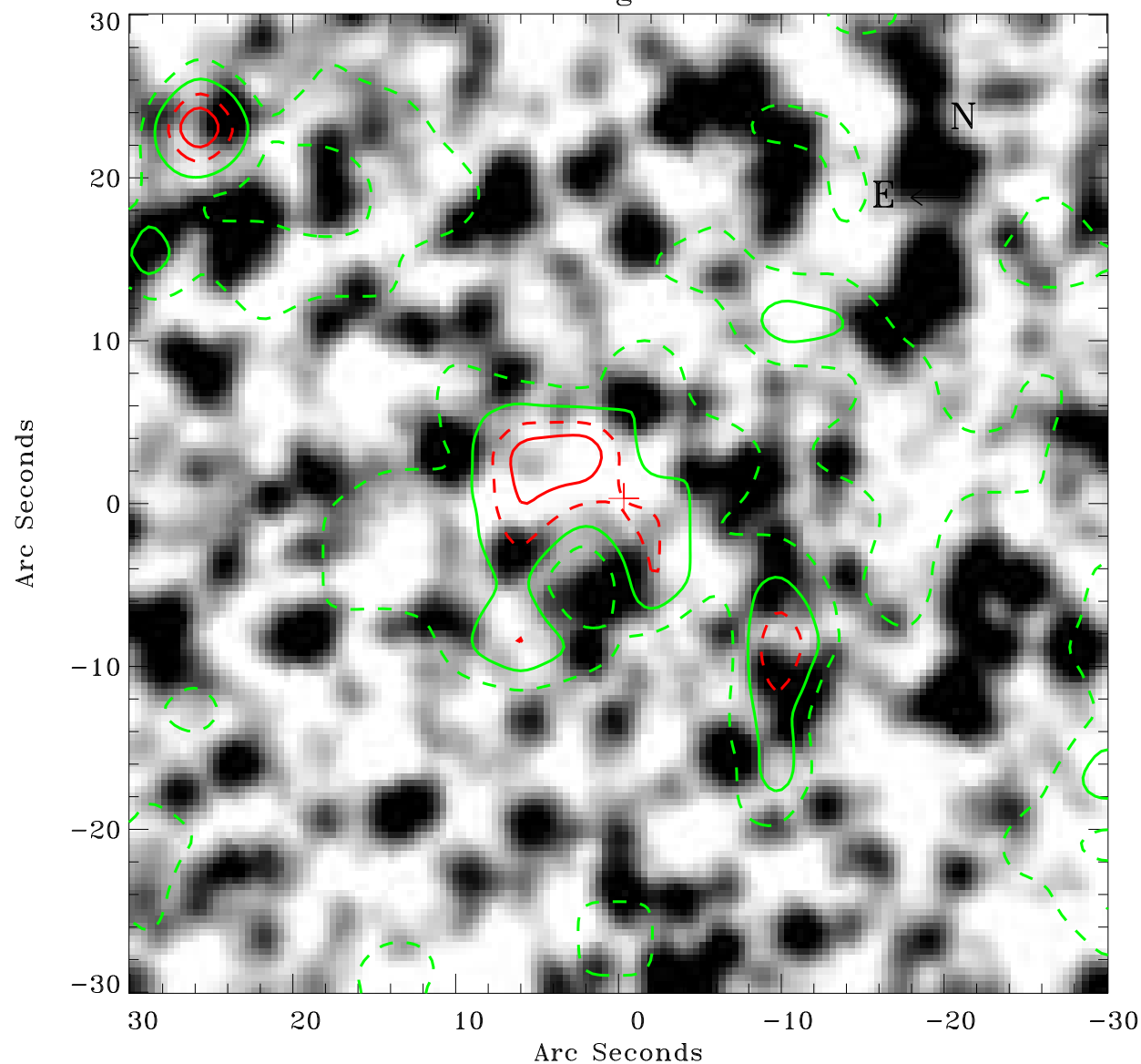


EPIC source finding chart ACDS V10.0



Principal Investigator :

Dr Frank Haberl

XMM target name :

LMC survey 66

OBS ID : 690751601

Source number : 22

X-ray coordinates :

α : 05 42 53.32

δ : -70 26 56.8

Center coordinates :

α : 05 42 53.30

δ : -70 26 56.7

Plate reference :

Origin : CDS HIPs Network

Plate : MAMA srcj

Pixel : 0.40 "/pix

Contour levels (counts) :

--- 3.31E+00 --- 5.01E+00

--- 6.75E+00 --- 8.29E+00

XMM SSC

Apr 21 14:34:41 2019