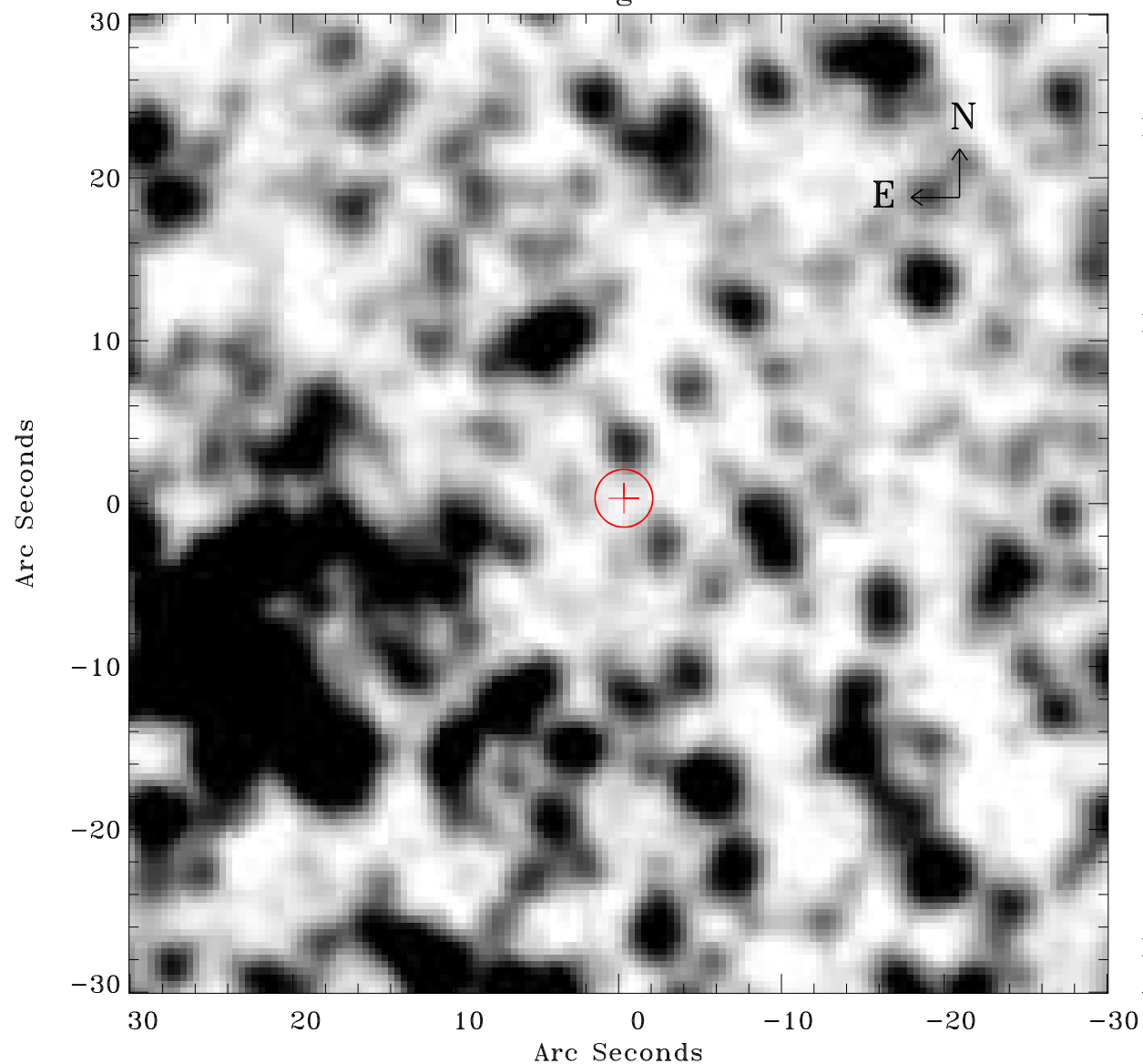


# EPIC source finding chart ACDS V10.0



Principal Investigator :

Dr Frank Haberl

XMM target name :

LMC survey 66

OBS ID : 690751601

Source number : 23

X-ray coordinates :

$\alpha$  : 05 40 34.69

$\delta$  : -70 38 16.6

Center coordinates :

$\alpha$  : 05 40 34.67

$\delta$  : -70 38 16.5

Plate reference :

Origin : CDS HIPs Network

Plate : MAMA srcj

Pixel : 0.40 "/pix

Error circle :

$R_{90}$  (") : 1.8

XMM SSC

Apr 21 14:29:03 2019