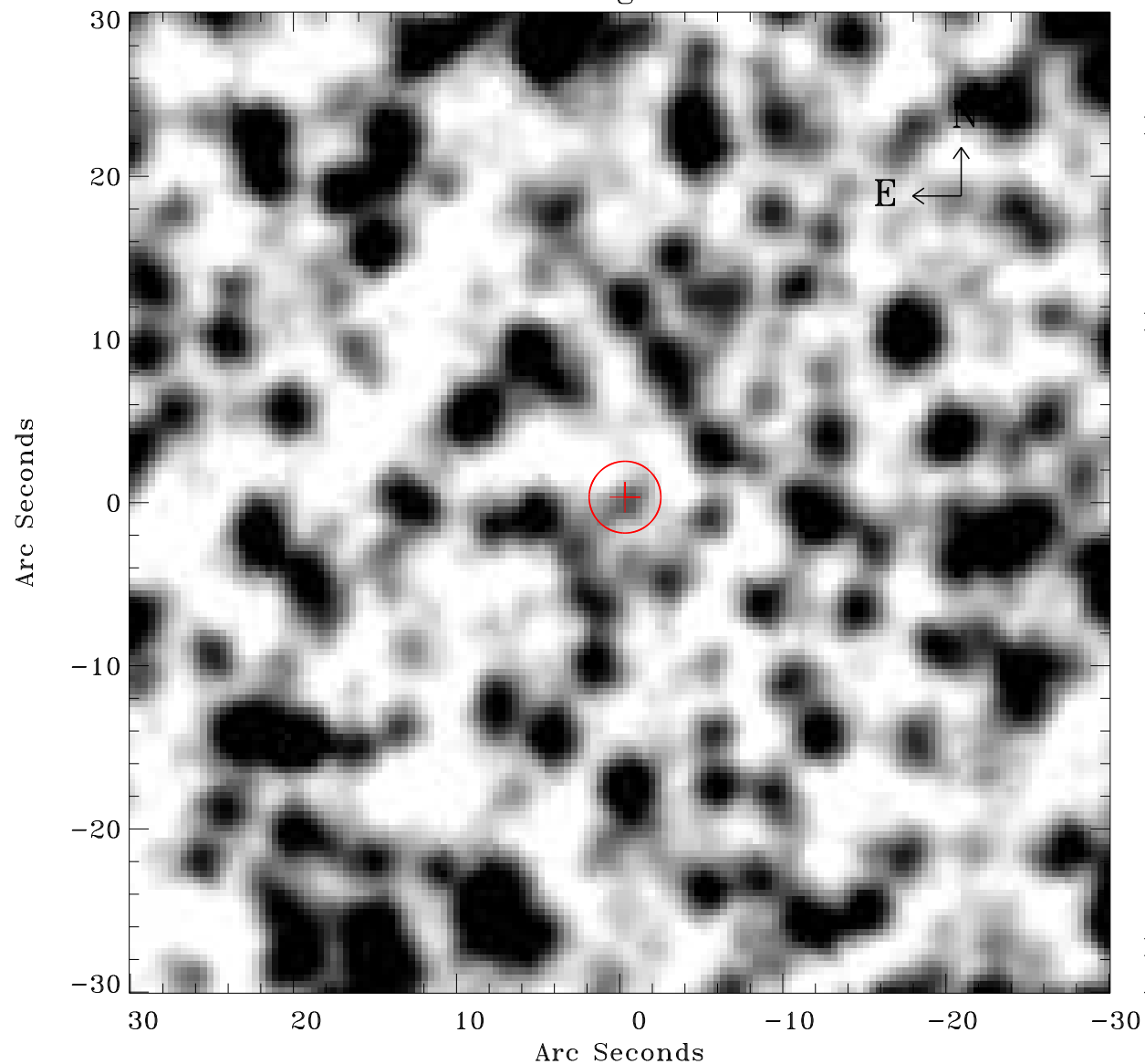


EPIC source finding chart ACDS V10.0



Principal Investigator :

Dr Frank Haberl

XMM target name :

LMC survey 66

OBS ID : 690751601

Source number : 28

X-ray coordinates :

α : 05 41 26.32

δ : -70 29 48.6

Center coordinates :

α : 05 41 26.30

δ : -70 29 48.6

Plate reference :

Origin : CDS HIPs Network

Plate : MAMA srcj

Pixel : 0.40 "/pix

Error circle :

R_{90} (") : 2.2

XMM SSC

Apr 21 14:30:49 2019