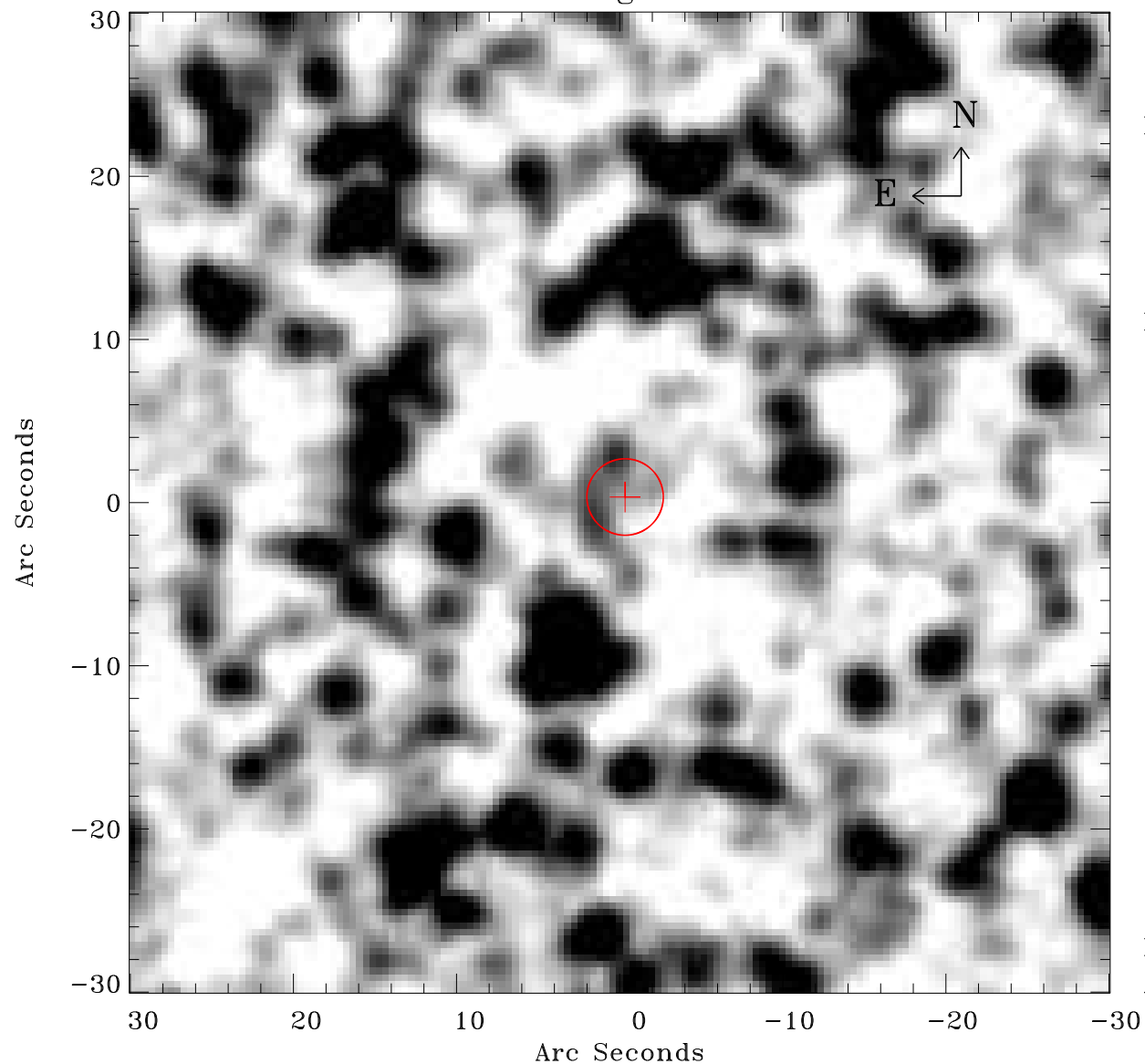


# EPIC source finding chart ACDS V10.0



Principal Investigator :

Dr Frank Haberl

XMM target name :

LMC survey 66

OBS ID : 690751601

Source number : 35

X-ray coordinates :

$\alpha$  : 05 43 31.37

$\delta$  : -70 23 11.8

Center coordinates :

$\alpha$  : 05 43 31.36

$\delta$  : -70 23 11.7

Plate reference :

Origin : CDS HIPs Network

Plate : MAMA srcj

Pixel : 0.40 "/pix

Error circle :

$R_{90}$  (") : 2.3

XMM SSC

Apr 21 14:37:24 2019