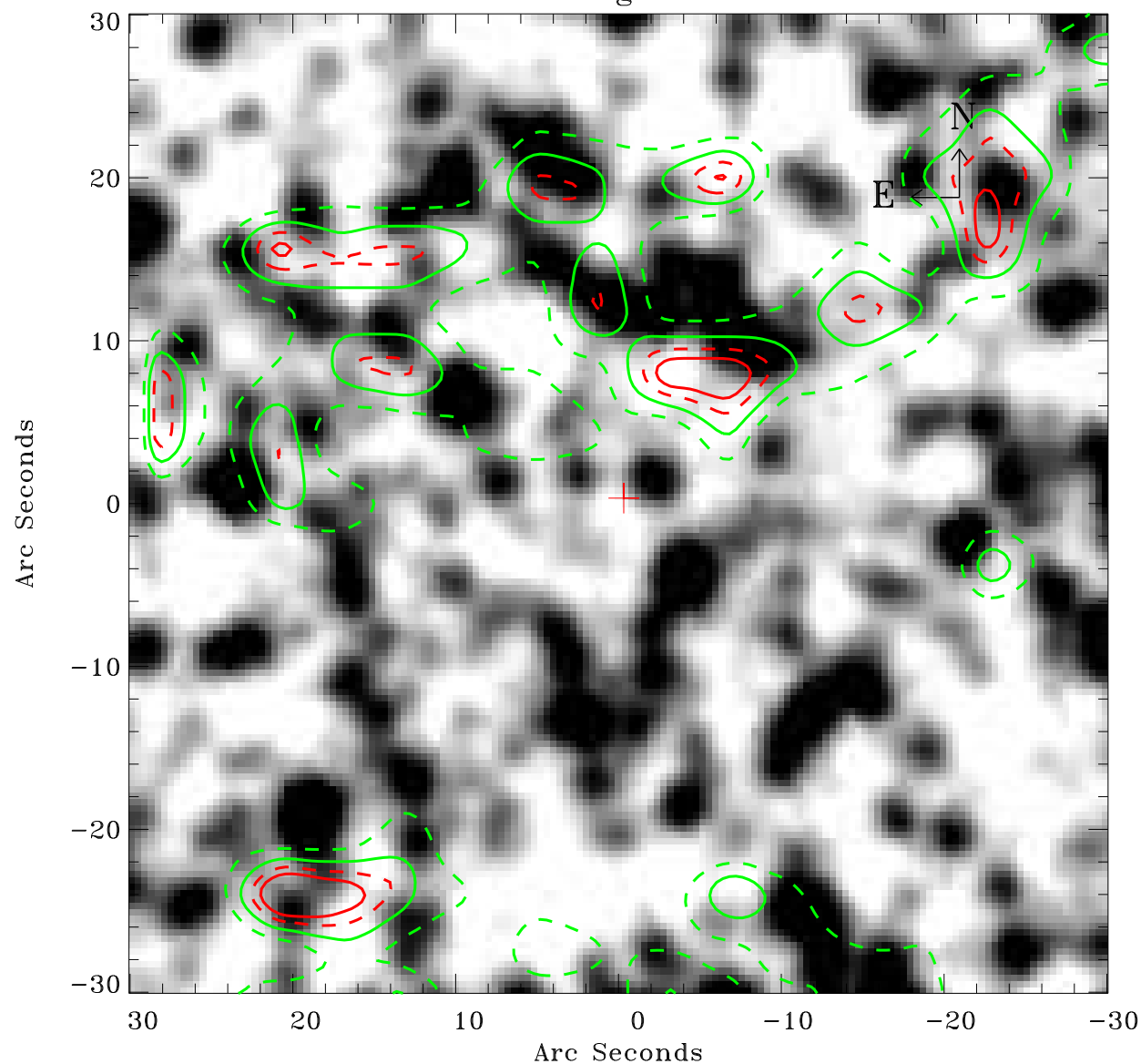


# EPIC source finding chart ACDS V10.0



Principal Investigator :

Dr Frank Haberl

XMM target name :

LMC survey 66

OBS ID : 690751601

Source number : 64

X-ray coordinates :

$\alpha$  : 05 40 19.42

$\delta$  : -70 30 24.4

Center coordinates :

$\alpha$  : 05 40 19.40

$\delta$  : -70 30 24.3

Plate reference :

Origin : CDS HIPs Network

Plate : MAMA srcj

Pixel : 0.40 "/pix

Contour levels (counts) :

2.24E+00 3.16E+00

3.91E+00 4.50E+00

XMM SSC

Apr 21 14:28:28 2019