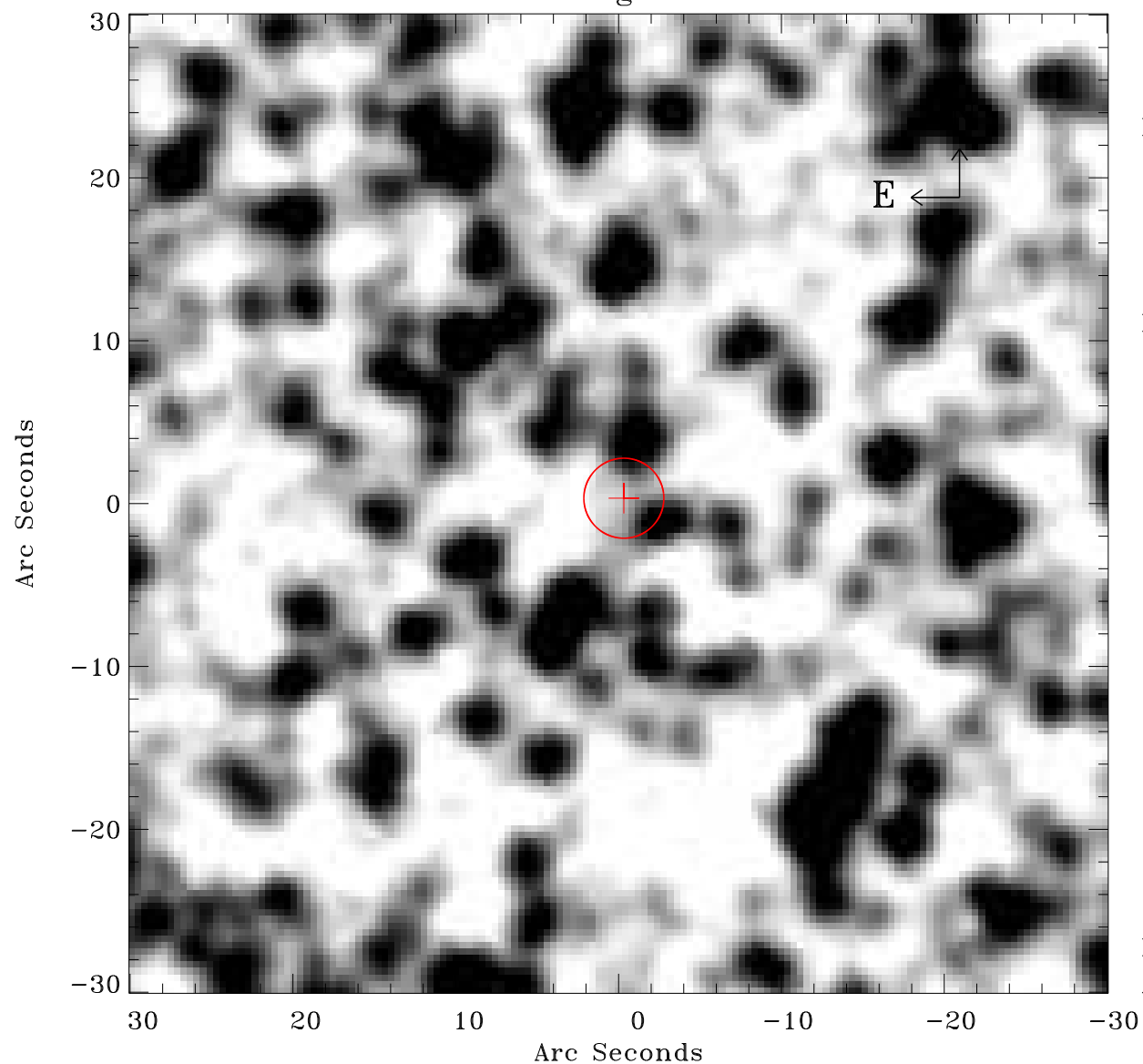


EPIC source finding chart ACDS V10.0



Principal Investigator :

Dr Frank Haberl

XMM target name :

LMC survey 66

OBS ID : 690751601

Source number : 96

X-ray coordinates :

α : 05 42 58.49

δ : -70 25 05.9

Center coordinates :

α : 05 42 58.48

δ : -70 25 05.8

Plate reference :

Origin : CDS HIPs Network

Plate : MAMA srcj

Pixel : 0.40 "/pix

Error circle :

R_{90} (") : 2.4

XMM SSC

Apr 21 14:34:44 2019