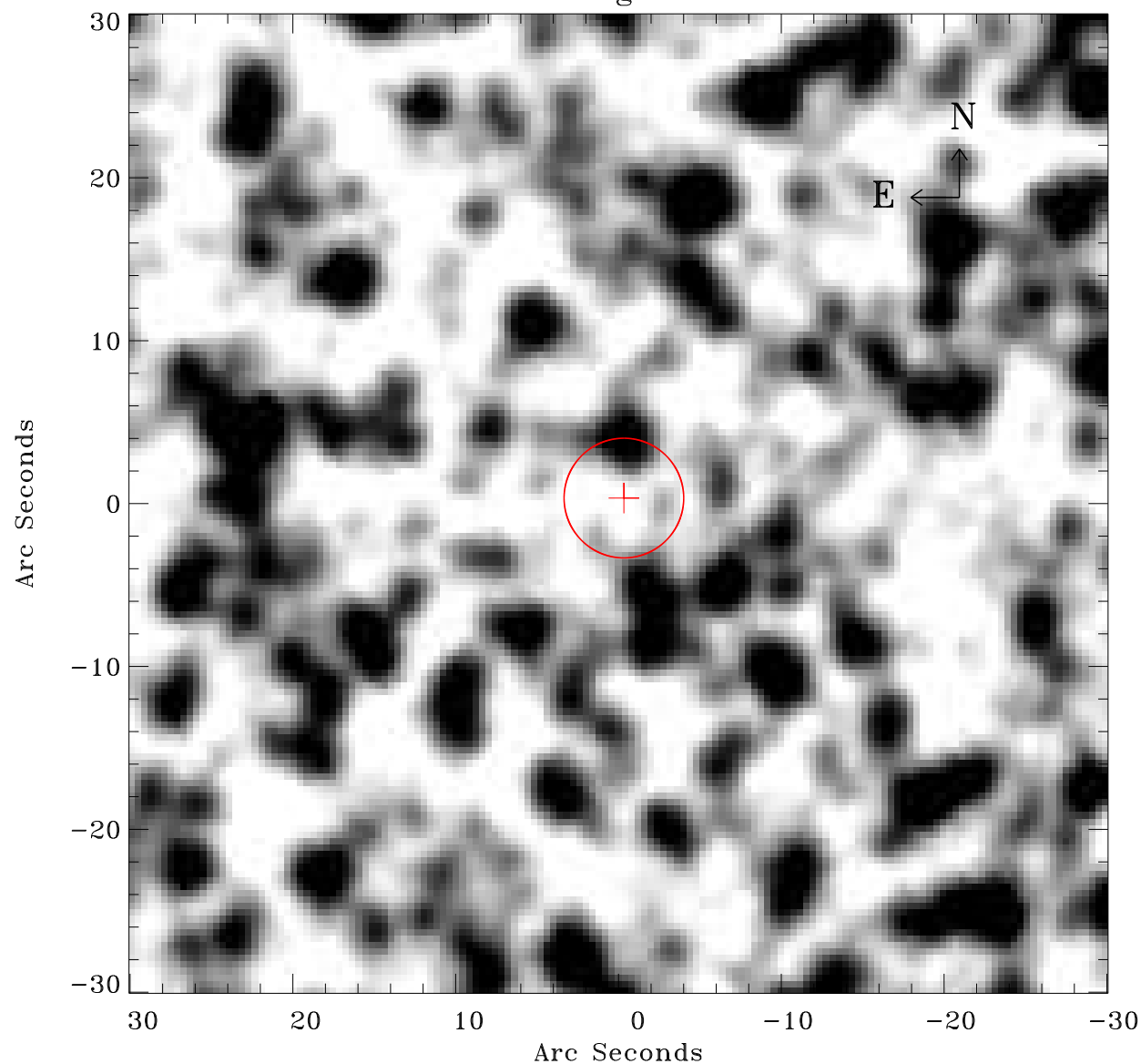


# EPIC source finding chart ACDS V10.0



Principal Investigator :

Dr Frank Haberl

XMM target name :

LMC survey 66

OBS ID : 690751601

Source number : 113

X-ray coordinates :

$\alpha$  : 05 42 25.32

$\delta$  : -70 21 04.1

Center coordinates :

$\alpha$  : 05 42 25.31

$\delta$  : -70 21 04.0

Plate reference :

Origin : CDS HIPs Network

Plate : MAMA srcj

Pixel : 0.40 "/pix

Error circle :

$R_{90}$  (") : 3.6

XMM SSC

Apr 21 14:33:16 2019