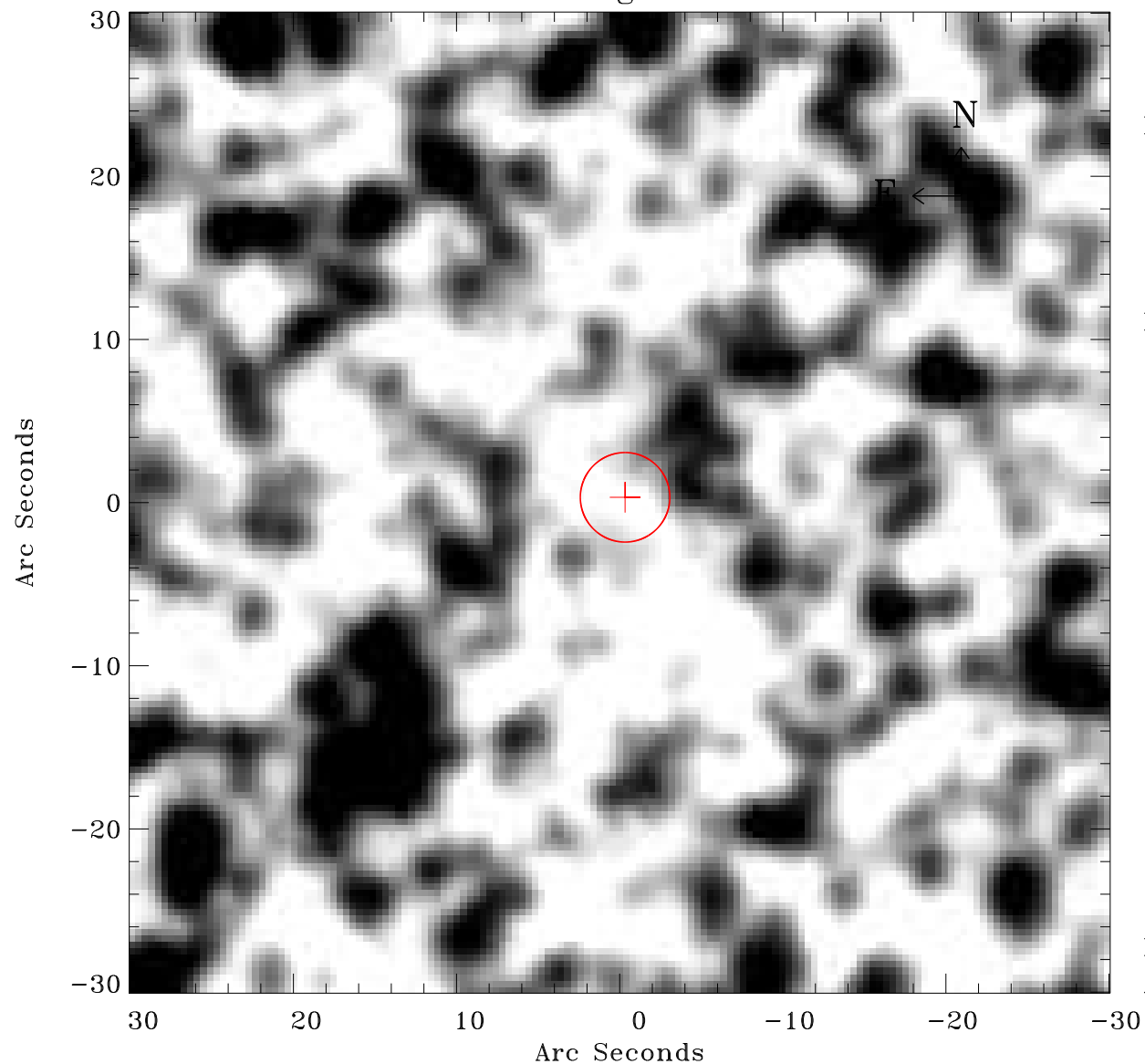


EPIC source finding chart ACDS V10.0



Principal Investigator :

Dr Frank Haberl

XMM target name :

LMC survey 66

OBS ID : 690751601

Source number : 120

X-ray coordinates :

α : 05 41 14.98

δ : -70 26 23.8

Center coordinates :

α : 05 41 14.97

δ : -70 26 23.7

Plate reference :

Origin : CDS HIPs Network

Plate : MAMA srcj

Pixel : 0.40 "/pix

Error circle :

R_{90} (") : 2.7

XMM SSC

Apr 21 14:30:21 2019