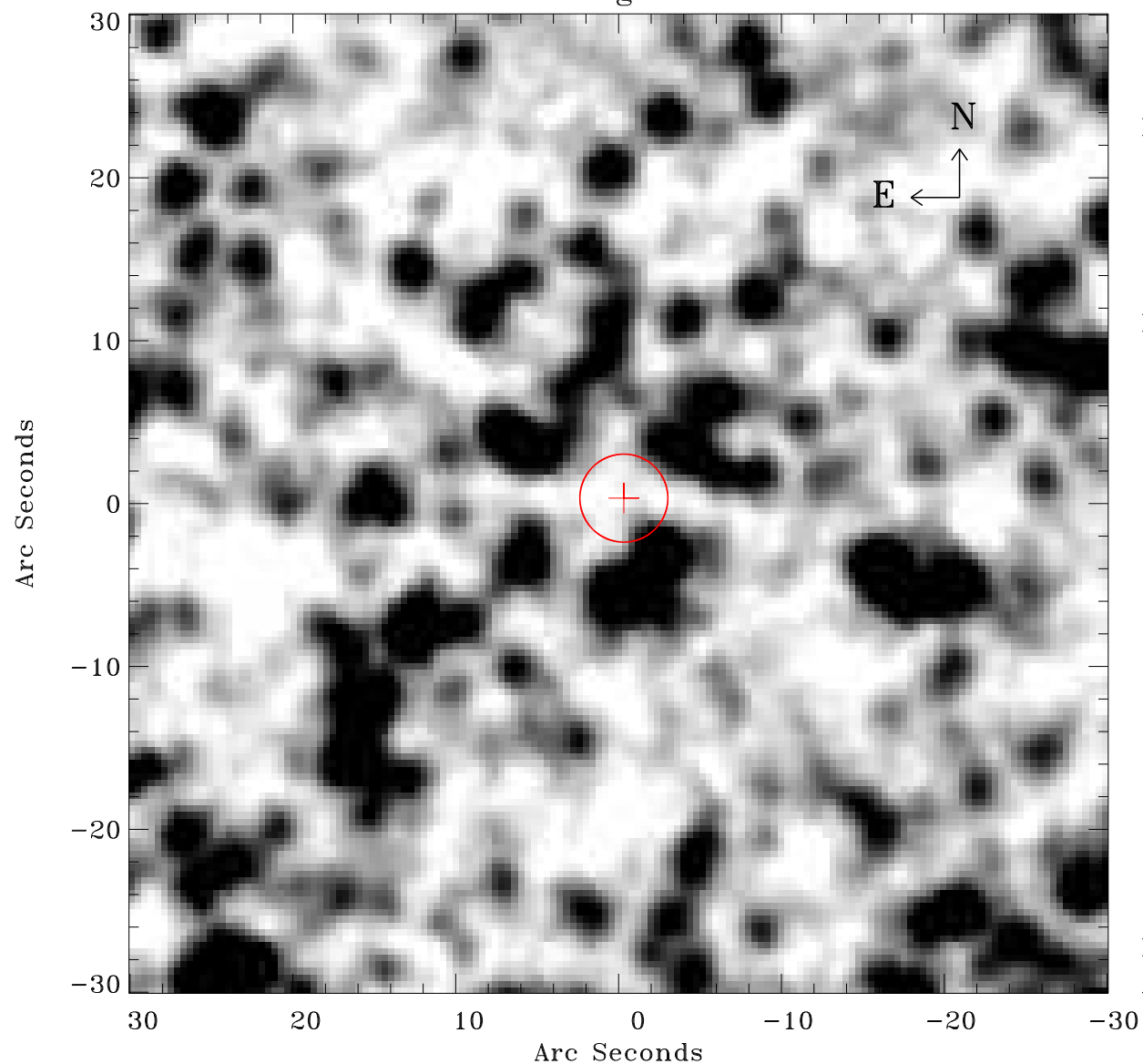


# EPIC source finding chart ACDS V10.0



Principal Investigator :

Dr Frank Haberl

XMM target name :

LMC survey 66

OBS ID : 690751601

Source number : 132

X-ray coordinates :

$\alpha$  : 05 42 46.13

$\delta$  : -70 22 31.0

Center coordinates :

$\alpha$  : 05 42 46.11

$\delta$  : -70 22 30.9

Plate reference :

Origin : CDS HIPs Network

Plate : MAMA srcj

Pixel : 0.40 "/pix

Error circle :

$R_{90}$  (") : 2.7

XMM SSC

Apr 21 14:34:29 2019