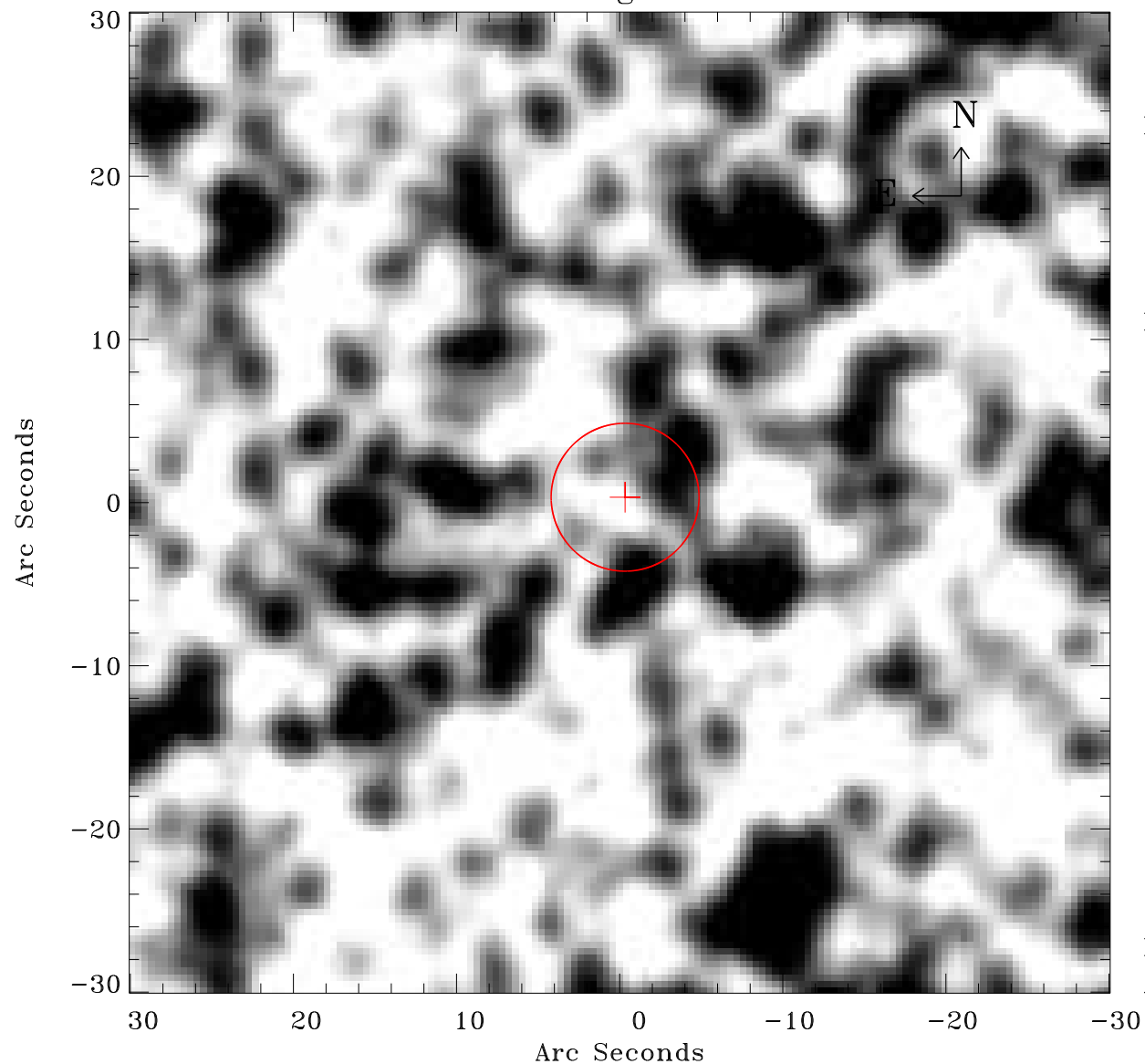


# EPIC source finding chart ACDS V10.0



Principal Investigator :

Dr Frank Haberl

XMM target name :

LMC survey 66

OBS ID : 690751601

Source number : 135

X-ray coordinates :

$\alpha$  : 05 40 29.43

$\delta$  : -70 26 19.4

Center coordinates :

$\alpha$  : 05 40 29.42

$\delta$  : -70 26 19.3

Plate reference :

Origin : CDS HIPs Network

Plate : MAMA srcj

Pixel : 0.40 "/pix

Error circle :

$R_{90}$  (") : 4.5

XMM SSC

Apr 21 14:28:50 2019