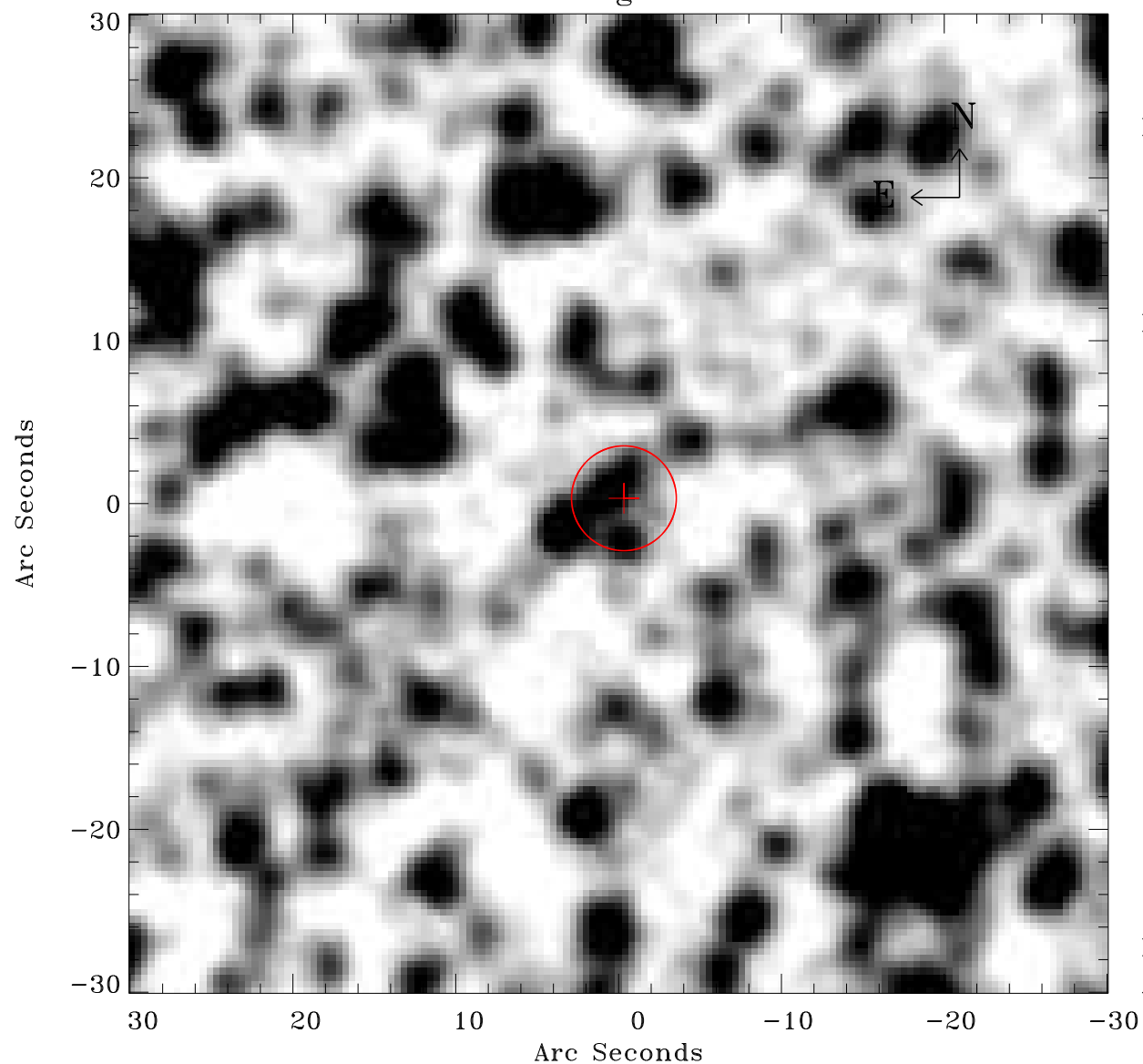


EPIC source finding chart ACDS V10.0



Principal Investigator :

Dr Frank Haberl

XMM target name :

LMC survey 66

OBS ID : 690751601

Source number : 145

X-ray coordinates :

α : 05 42 10.99

δ : -70 29 12.9

Center coordinates :

α : 05 42 10.97

δ : -70 29 12.8

Plate reference :

Origin : CDS HIPs Network

Plate : MAMA srcj

Pixel : 0.40 "/pix

Error circle :

R_{90} (") : 3.2

XMM SSC

Apr 21 14:32:50 2019