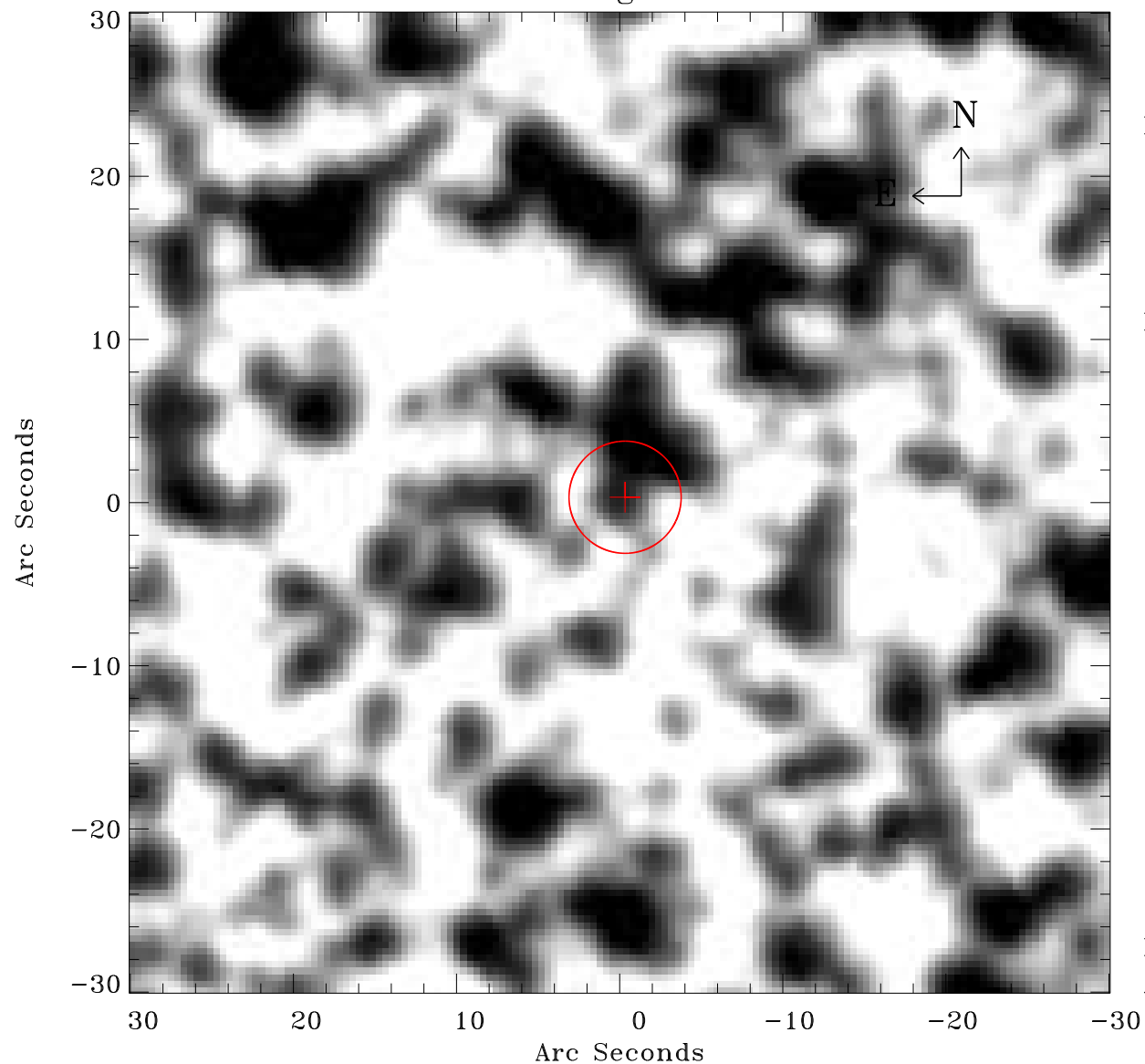


EPIC source finding chart ACDS V10.0



Principal Investigator :

Dr Frank Haberl

XMM target name :

LMC survey 66

OBS ID : 690751601

Source number : 155

X-ray coordinates :

α : 05 41 28.00

δ : -70 23 28.7

Center coordinates :

α : 05 41 27.99

δ : -70 23 28.6

Plate reference :

Origin : CDS HIPs Network

Plate : MAMA srcj

Pixel : 0.40 "/pix

Error circle :

R_{90} (") : 3.4

XMM SSC

Apr 21 14:30:51 2019