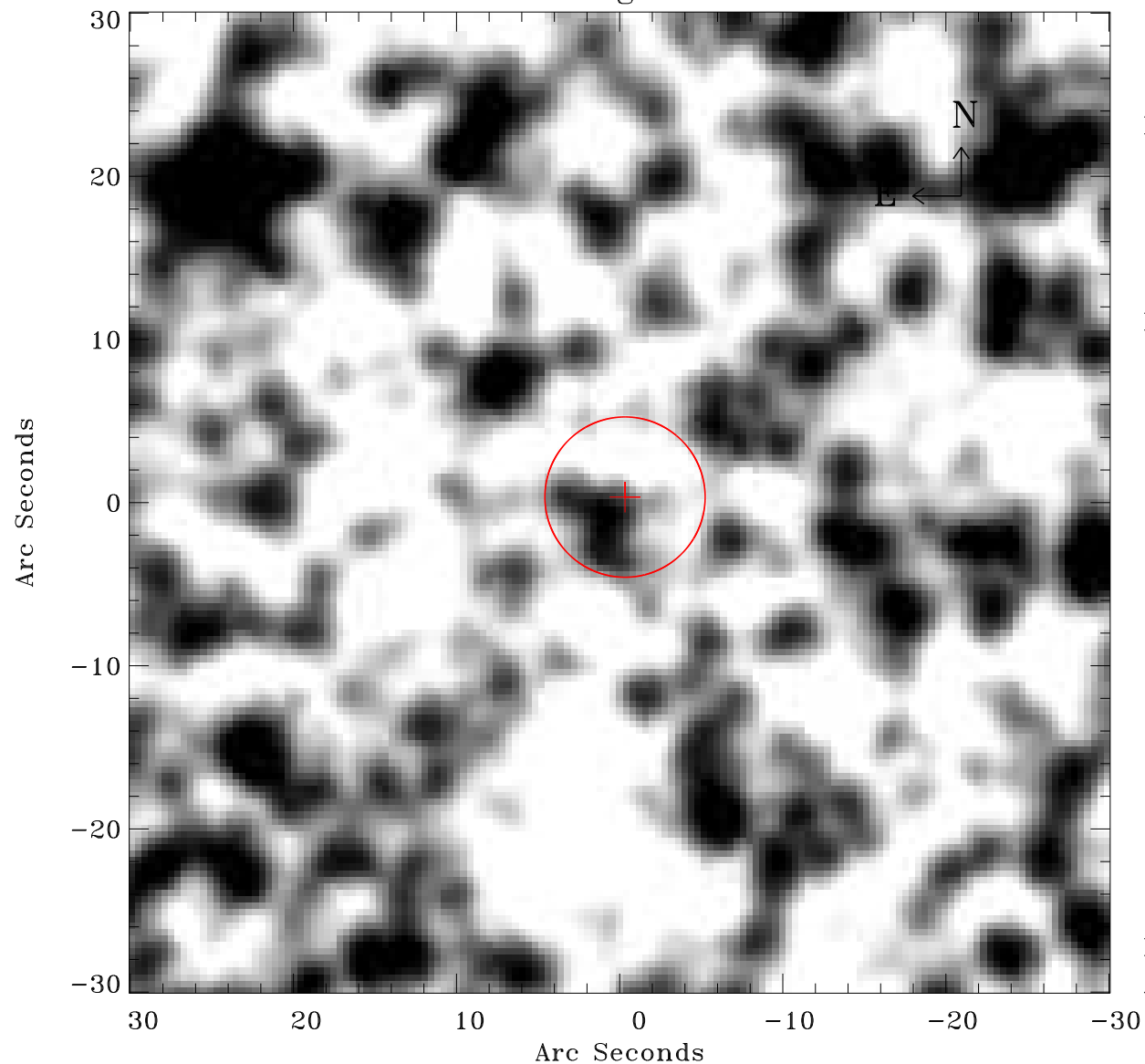


EPIC source finding chart ACDS V10.0



Principal Investigator :

Dr Frank Haberl

XMM target name :

LMC survey 66

OBS ID : 690751601

Source number : 158

X-ray coordinates :

α : 05 40 32.49

δ : -70 19 14.9

Center coordinates :

α : 05 40 32.47

δ : -70 19 14.8

Plate reference :

Origin : CDS HIPs Network

Plate : MAMA srcj

Pixel : 0.40 "/pix

Error circle :

R_{90} (") : 4.9

XMM SSC

Apr 21 14:28:54 2019