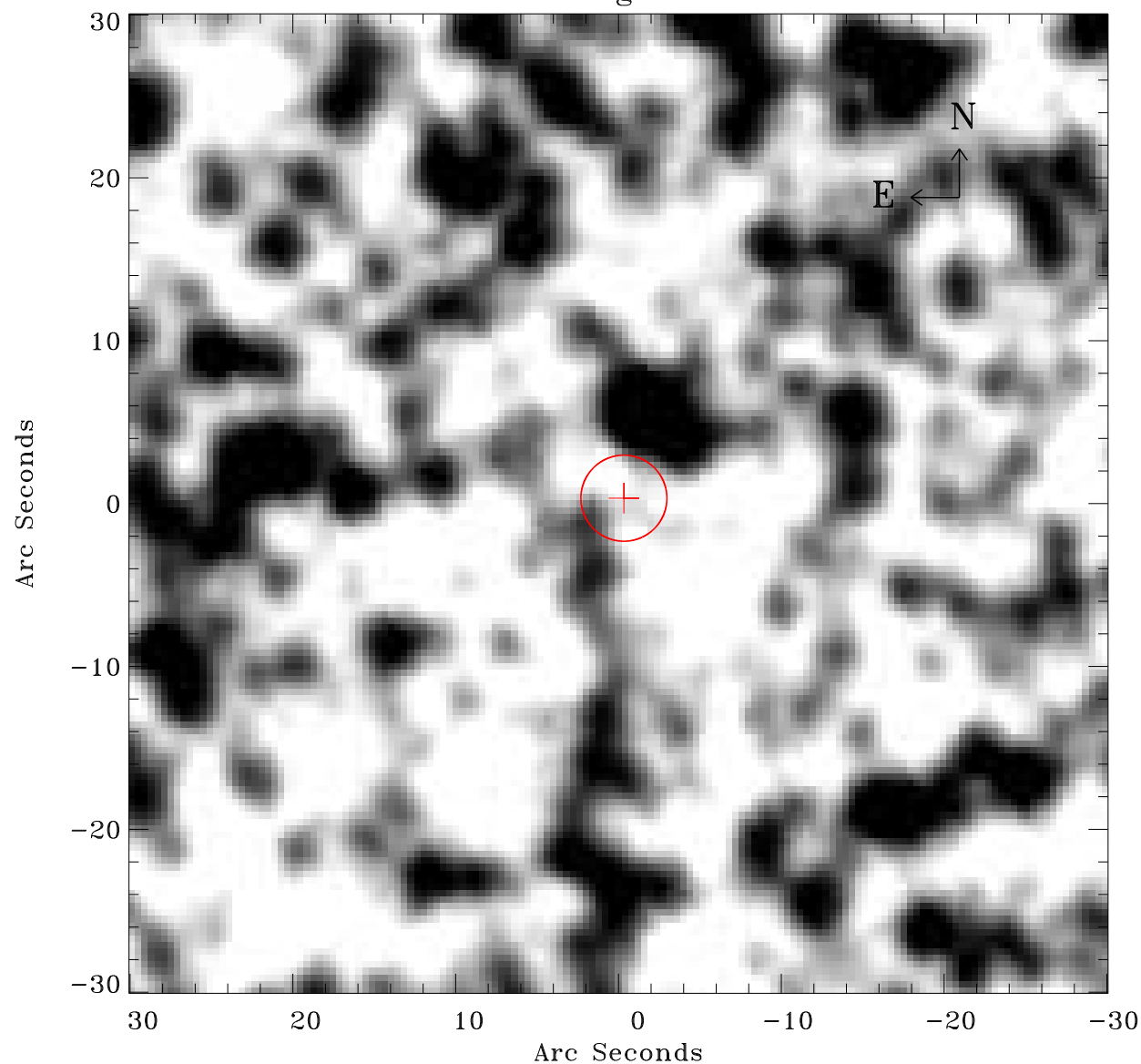


EPIC source finding chart ACDS V10.0



Principal Investigator :

Dr Frank Haberl

XMM target name :

LMC survey 66

OBS ID : 690751601

Source number : 167

X-ray coordinates :

α : 05 40 49.51

δ : -70 23 51.2

Center coordinates :

α : 05 40 49.49

δ : -70 23 51.2

Plate reference :

Origin : CDS HIPs Network

Plate : MAMA srcj

Pixel : 0.40 "/pix

Error circle :

R_{90} (") : 2.6

XMM SSC

Apr 21 14:29:36 2019