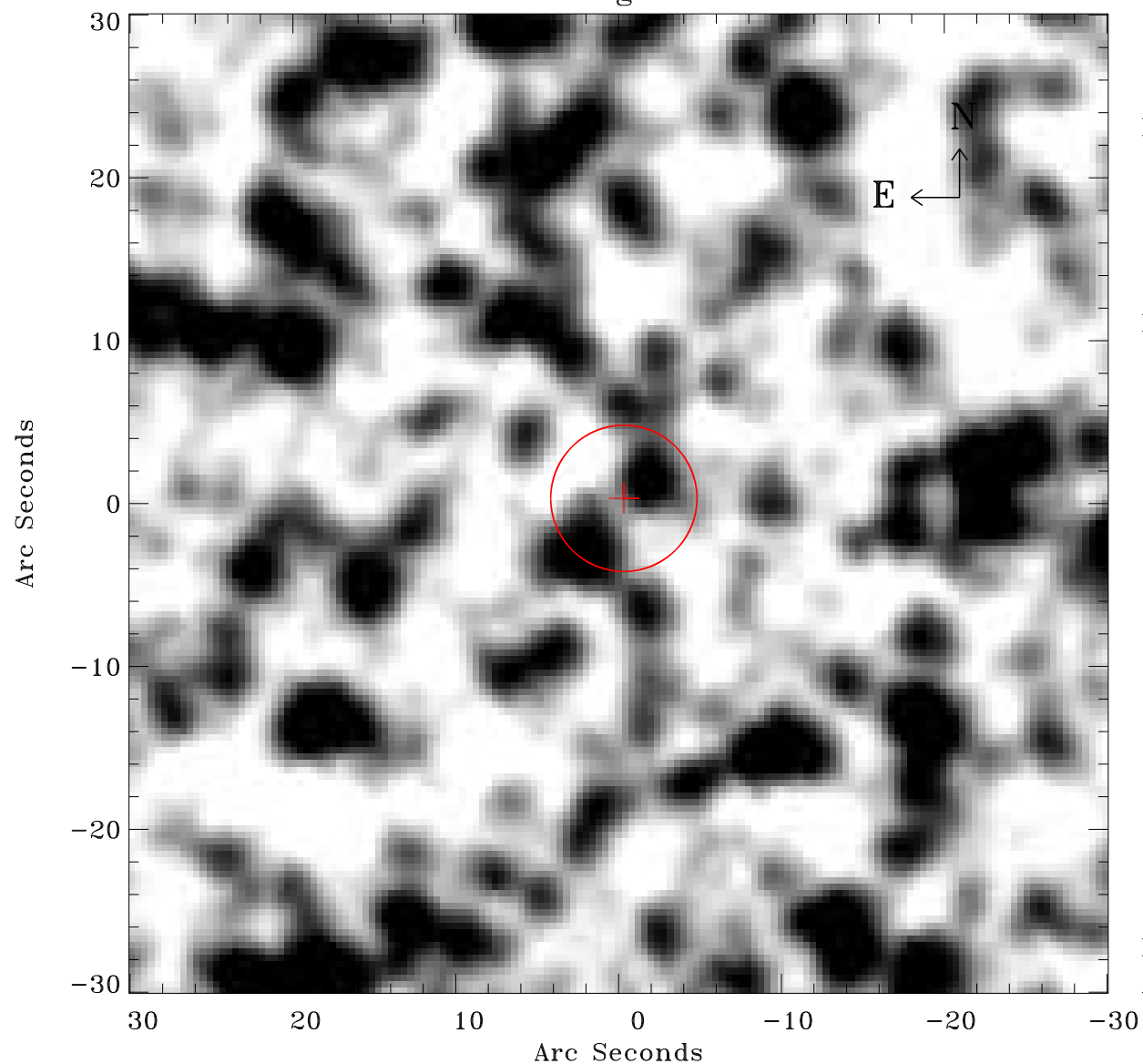


# EPIC source finding chart ACDS V10.0



Principal Investigator :

Dr Frank Haberl

XMM target name :

LMC survey 66

OBS ID : 690751601

Source number : 168

X-ray coordinates :

$\alpha$  : 05 39 03.03

$\delta$  : -70 27 18.7

Center coordinates :

$\alpha$  : 05 39 03.01

$\delta$  : -70 27 18.6

Plate reference :

Origin : CDS HIPs Network

Plate : MAMA srcj

Pixel : 0.40 "/pix

Error circle :

$R_{90}$  (") : 4.4

XMM SSC

Apr 21 14:26:13 2019