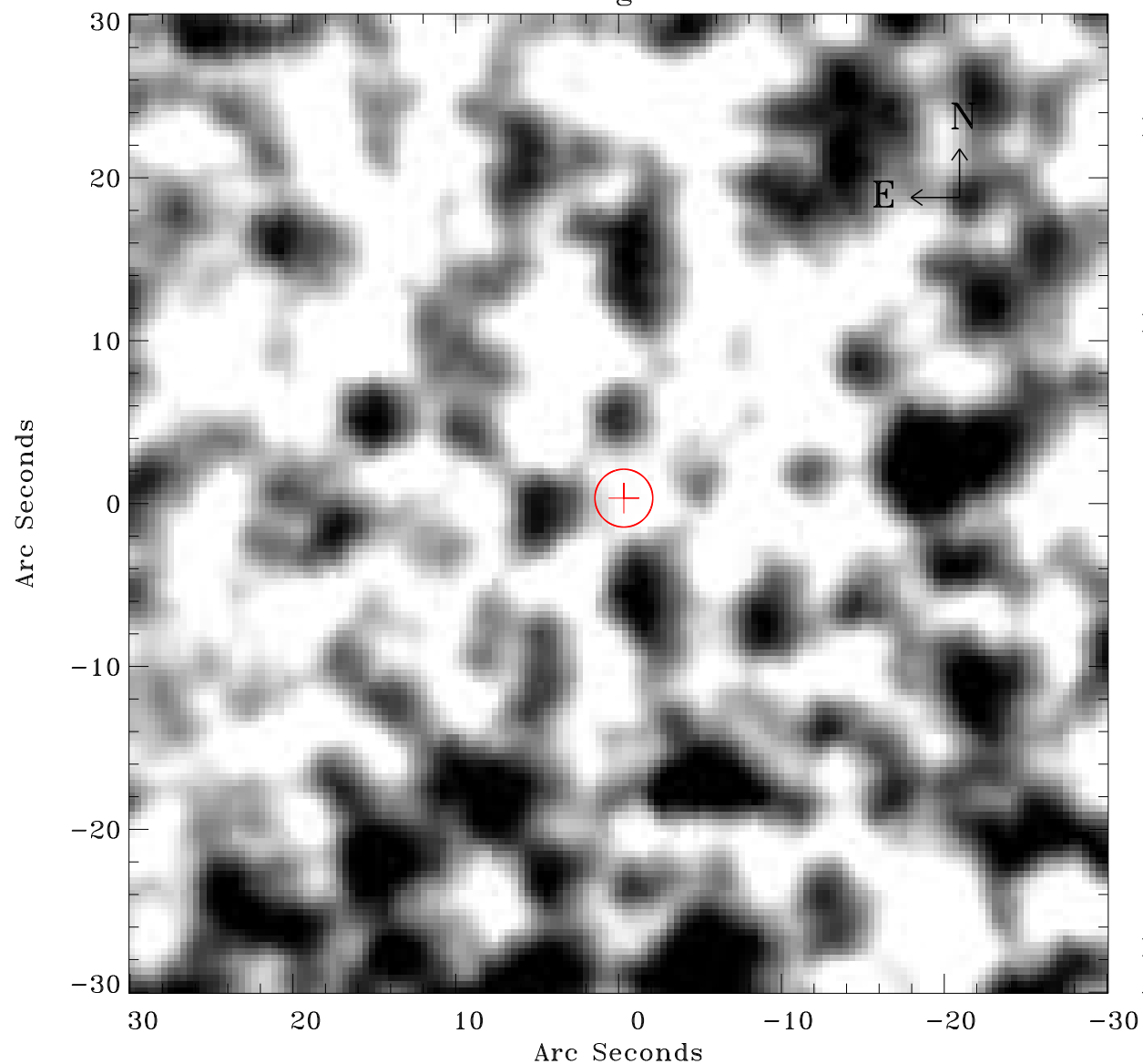


# EPIC source finding chart ACDS V10.0



Principal Investigator :

Dr Frank Haberl

XMM target name :

LMC survey 70

OBS ID : 690752001

Source number : 28

X-ray coordinates :

$\alpha$  : 05 08 07.14

$\delta$  : -69 01 51.1

Center coordinates :

$\alpha$  : 05 08 07.13

$\delta$  : -69 01 51.0

Plate reference :

Origin : CDS HIPs Network

Plate : MAMA srcj

Pixel : 0.40 "/pix

Error circle :

$R_{90}$  (") : 1.8

XMM SSC

Apr 19 17:13:04 2019