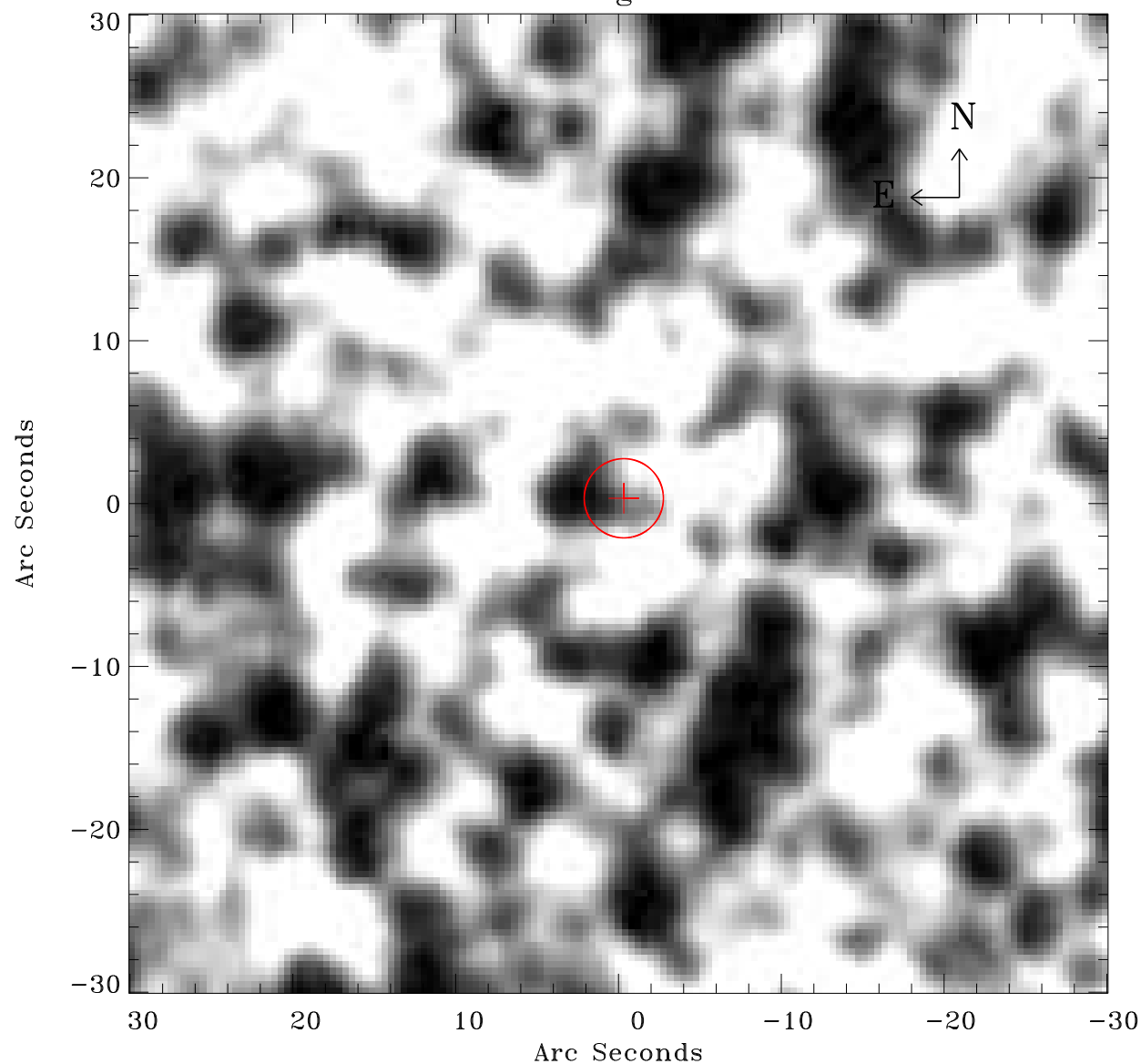


# EPIC source finding chart ACDS V10.0



Principal Investigator :

Dr Frank Haberl

XMM target name :

LMC survey 70

OBS ID : 690752001

Source number : 36

X-ray coordinates :

$\alpha$  : 05 11 10.81

$\delta$  : -69 01 58.2

Center coordinates :

$\alpha$  : 05 11 10.80

$\delta$  : -69 01 58.1

Plate reference :

Origin : CDS HIPs Network

Plate : MAMA srcj

Pixel : 0.40 "/pix

Error circle :

$R_{90}$  (") : 2.4

XMM SSC

Apr 19 17:14:22 2019