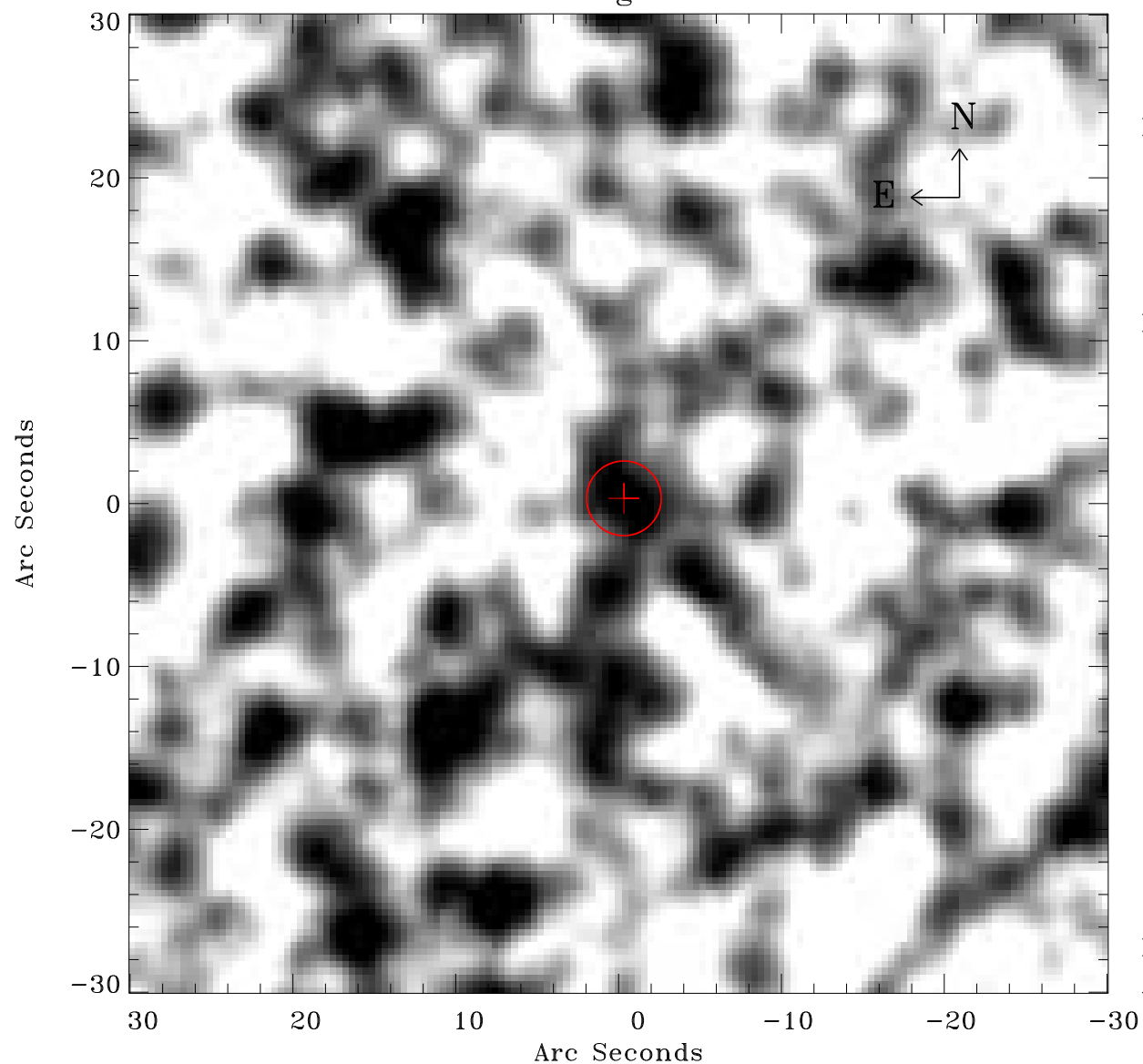


EPIC source finding chart ACDS V10.0



Principal Investigator :

Dr Frank Haberl

XMM target name :

LMC survey 70

OBS ID : 690752001

Source number : 45

X-ray coordinates :

α : 05 07 23.07

δ : -69 16 04.3

Center coordinates :

α : 05 07 23.06

δ : -69 16 04.2

Plate reference :

Origin : CDS HIPs Network

Plate : MAMA srcj

Pixel : 0.40 "/pix

Error circle :

R_{90} (") : 2.3

XMM SSC

Apr 19 17:12:49 2019