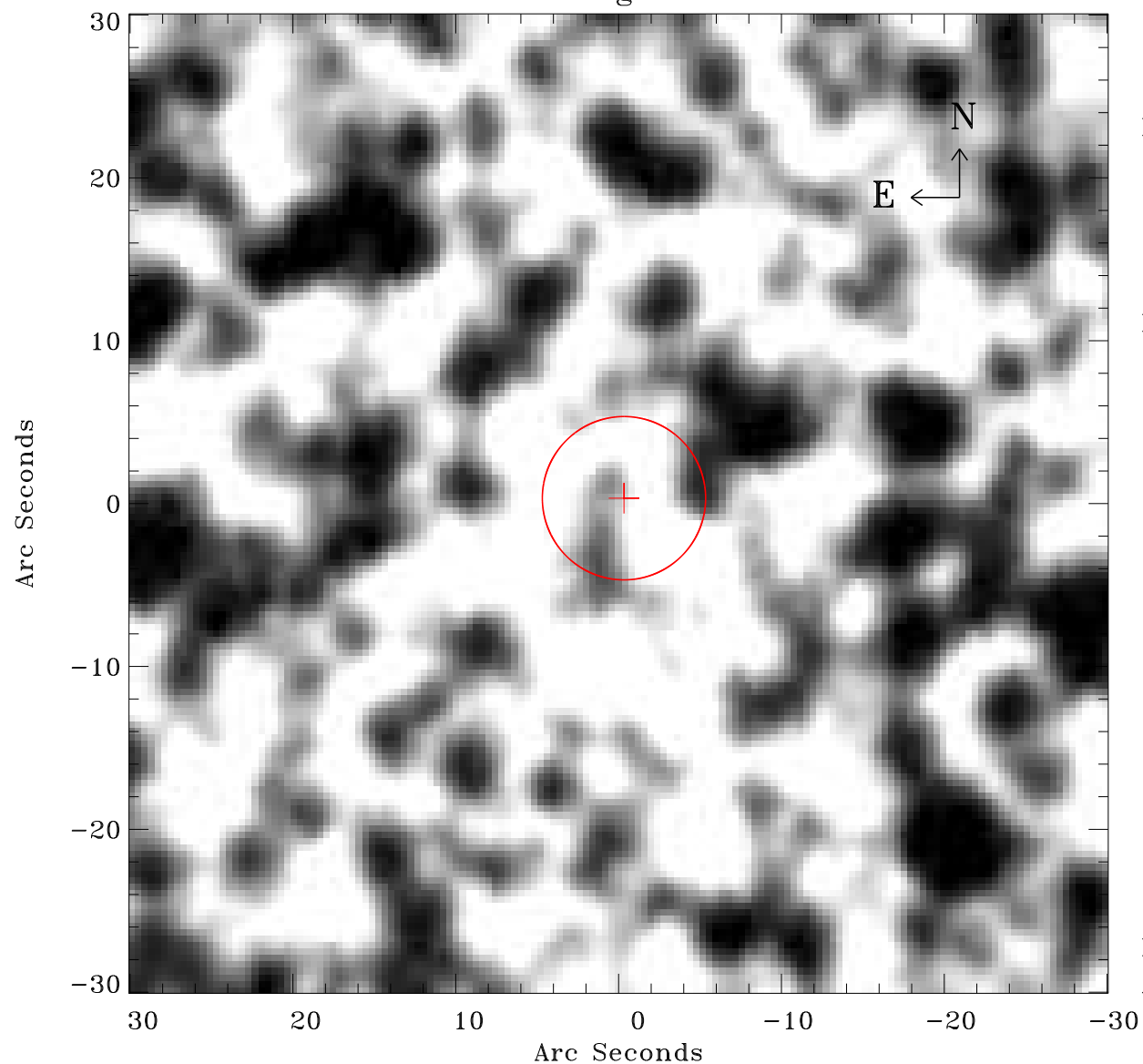


# EPIC source finding chart ACDS V10.0



Principal Investigator :

Dr Frank Haberl

XMM target name :

LMC survey 70

OBS ID : 690752001

Source number : 65

X-ray coordinates :

$\alpha$  : 05 06 15.41

$\delta$  : -69 10 15.3

Center coordinates :

$\alpha$  : 05 06 15.39

$\delta$  : -69 10 15.2

Plate reference :

Origin : CDS HIPs Network

Plate : MAMA srcj

Pixel : 0.40 "/pix

Error circle :

$R_{90}$  (") : 5.0

XMM SSC

Apr 19 17:12:35 2019