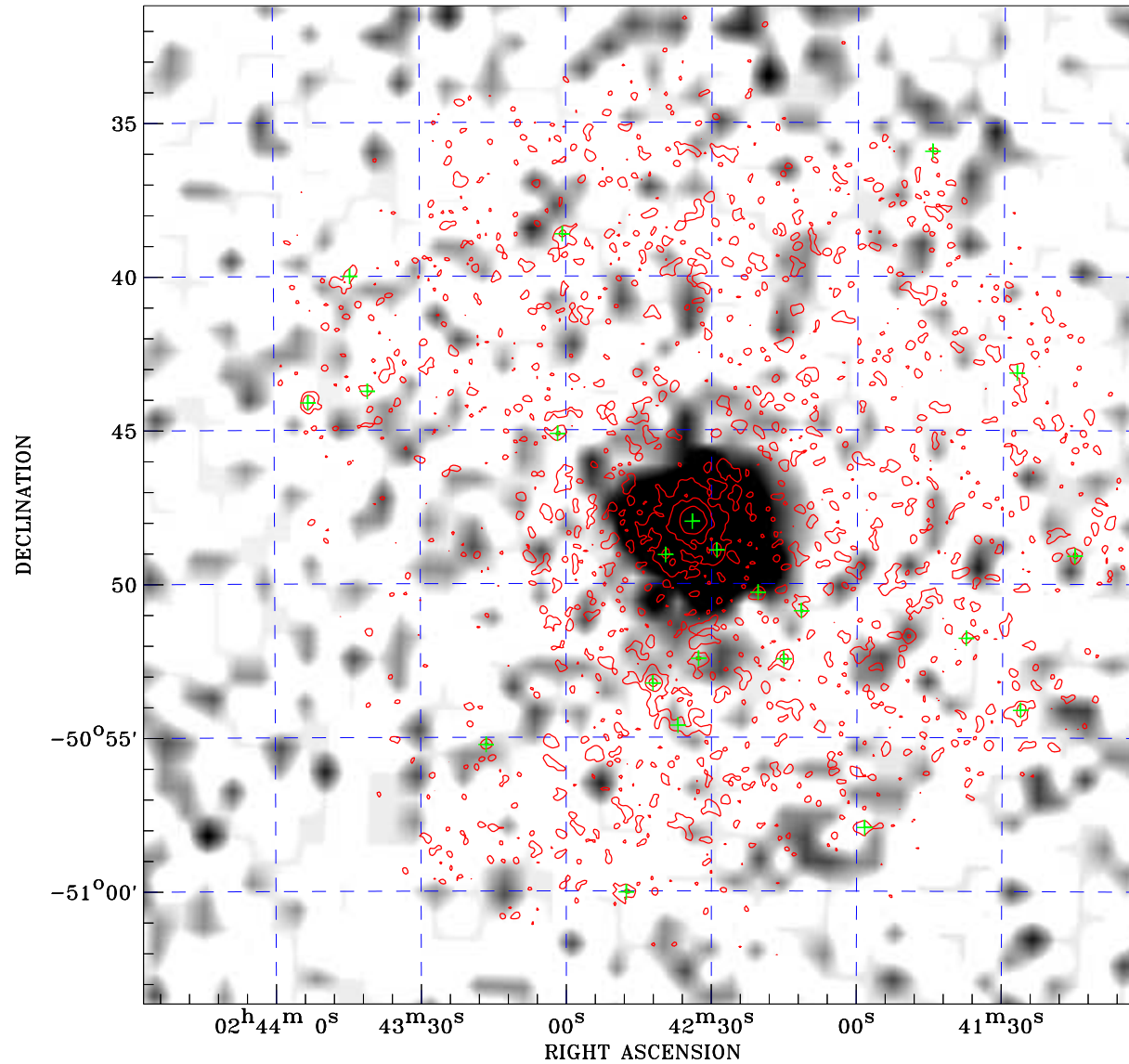


PDF XMM RASS image ACDS V10.0



Principal Investigator :
Dr Jorge Sanz-Forcada

XMM target name :
HR 810

Observation ID :
0693550601

Epic image :
 α : 02 42 44.20
 δ : -50 47 26.8
Energy band : 0.2–12.0 keV
MOS1 : 5813 s
MOS2 : 5813 s
PN : 2921 s

Contour levels (counts) :
 2σ : 4.485×10^{-1} 7σ : 1.124×10^0
 30σ : 4.232×10^0

RASS image :
Observation : 932605p
Instrument : PSPCC
 α : 02 31 38.87
 δ : -50 46 29.9

XMM SSC
Apr 25 14:39:40 2019

⊙ Epic image contour
levels at 2, 7 and 30 σ

+ Detected Epic sources