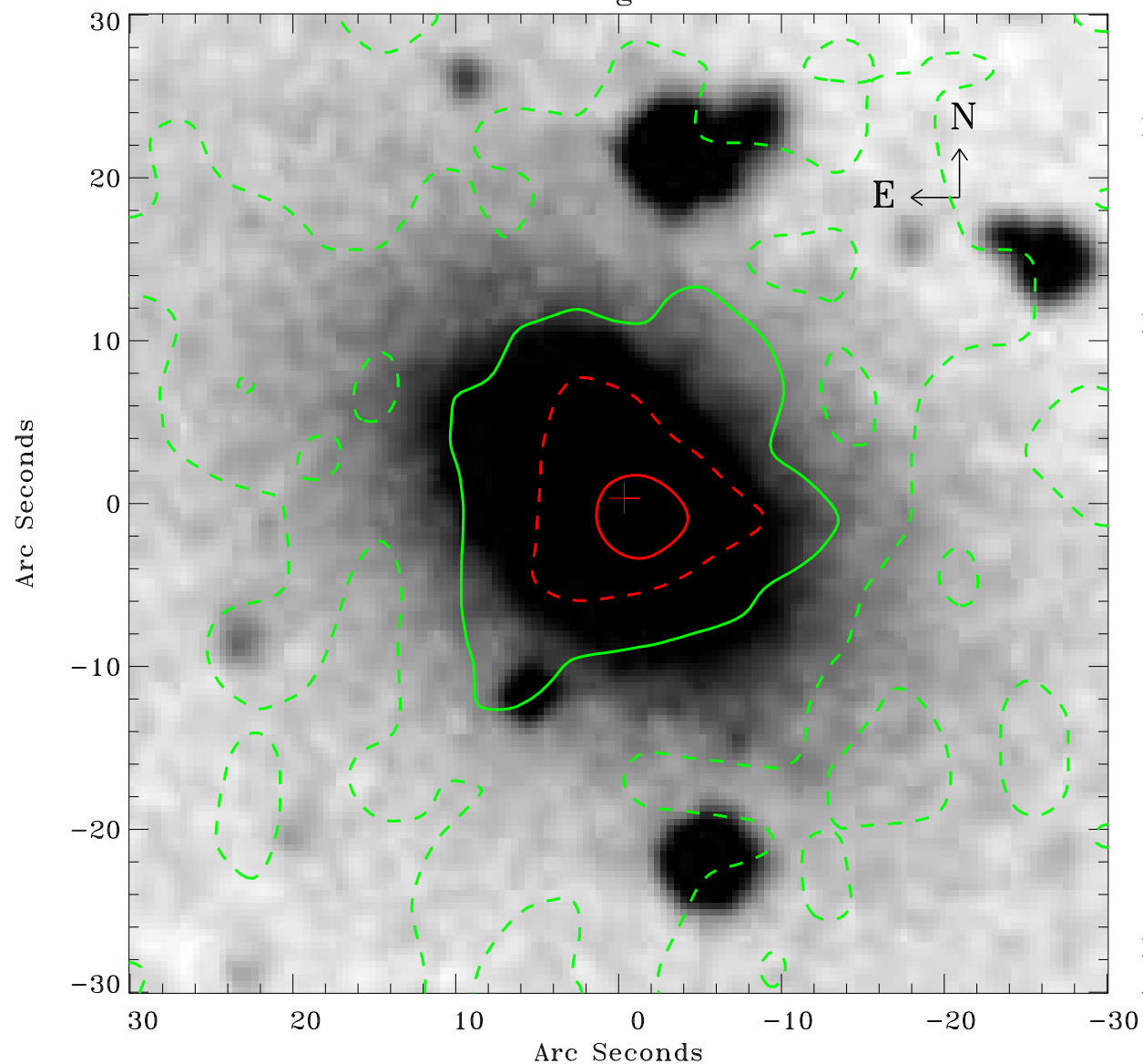


# EPIC source finding chart ACDS V10.0



Principal Investigator :

Dr Dacheng Lin

XMM target name :

2XMMi J184725-63172

OBS ID : 694610101

Source number : 4

X-ray coordinates :

$\alpha$  : 18 46 51.61

$\delta$  : -63 18 51.9

Center coordinates :

$\alpha$  : 18 46 51.60

$\delta$  : -63 18 51.8

Plate reference :

Origin : CDS HIPs Network

Plate : MAMA srcj

Pixel : 0.40 "/pix

Contour levels (counts) :

4.17E+00 1.06E+01

2.35E+01 4.02E+01

XMM SSC

Apr 26 23:36:07 2019