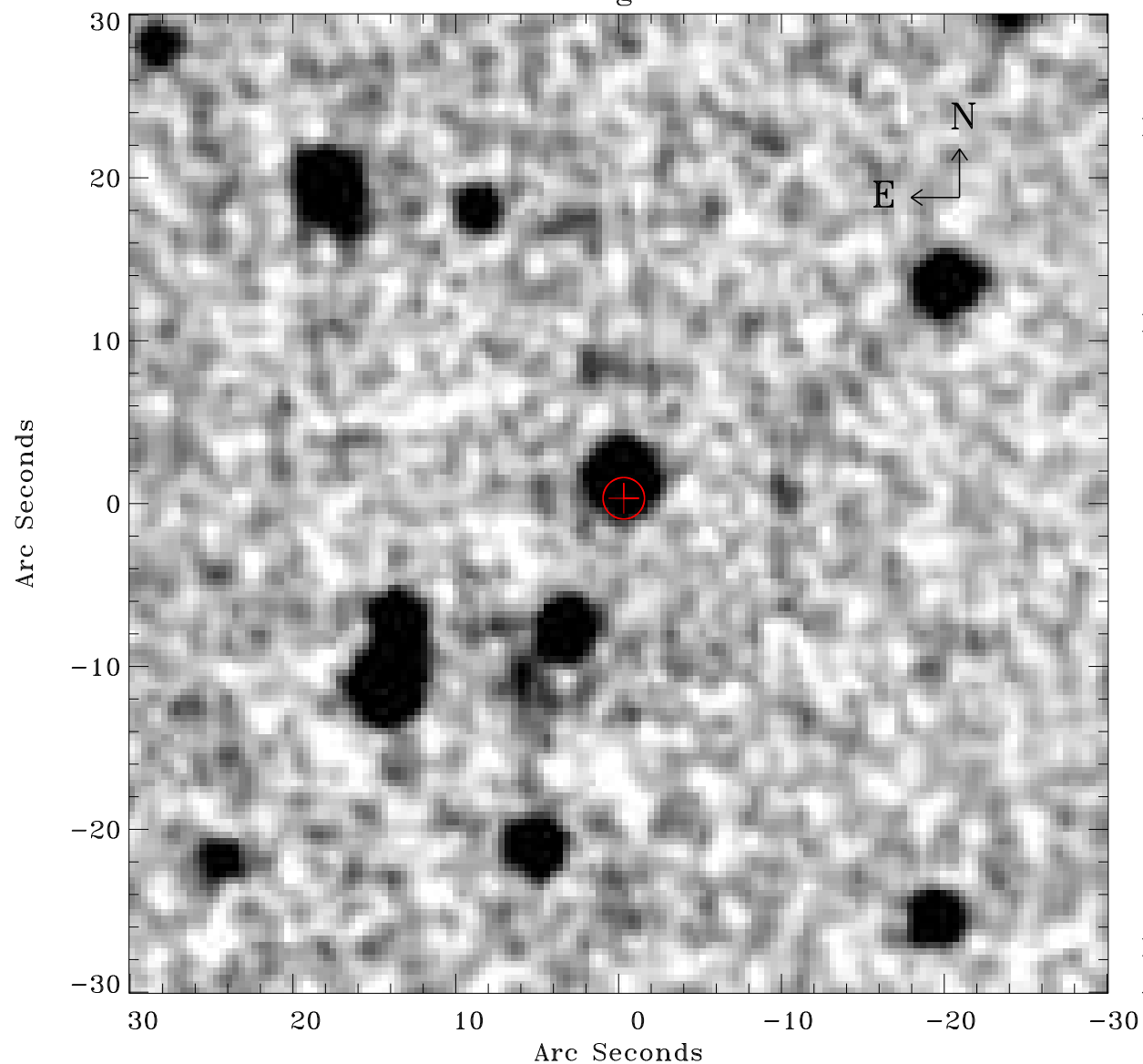


EPIC source finding chart ACDS V10.0



Principal Investigator :

Dr Dacheng Lin

XMM target name :

2XMMi J184725-63172

OBS ID : 694610101

Source number : 7

X-ray coordinates :

α : 18 48 19.50

δ : -63 16 49.4

Center coordinates :

α : 18 48 19.48

δ : -63 16 49.3

Plate reference :

Origin : CDS HIPs Network

Plate : MAMA srcj

Pixel : 0.40 "/pix

Error circle :

R_{90} (") : 1.3

XMM SSC

Apr 26 23:50:13 2019