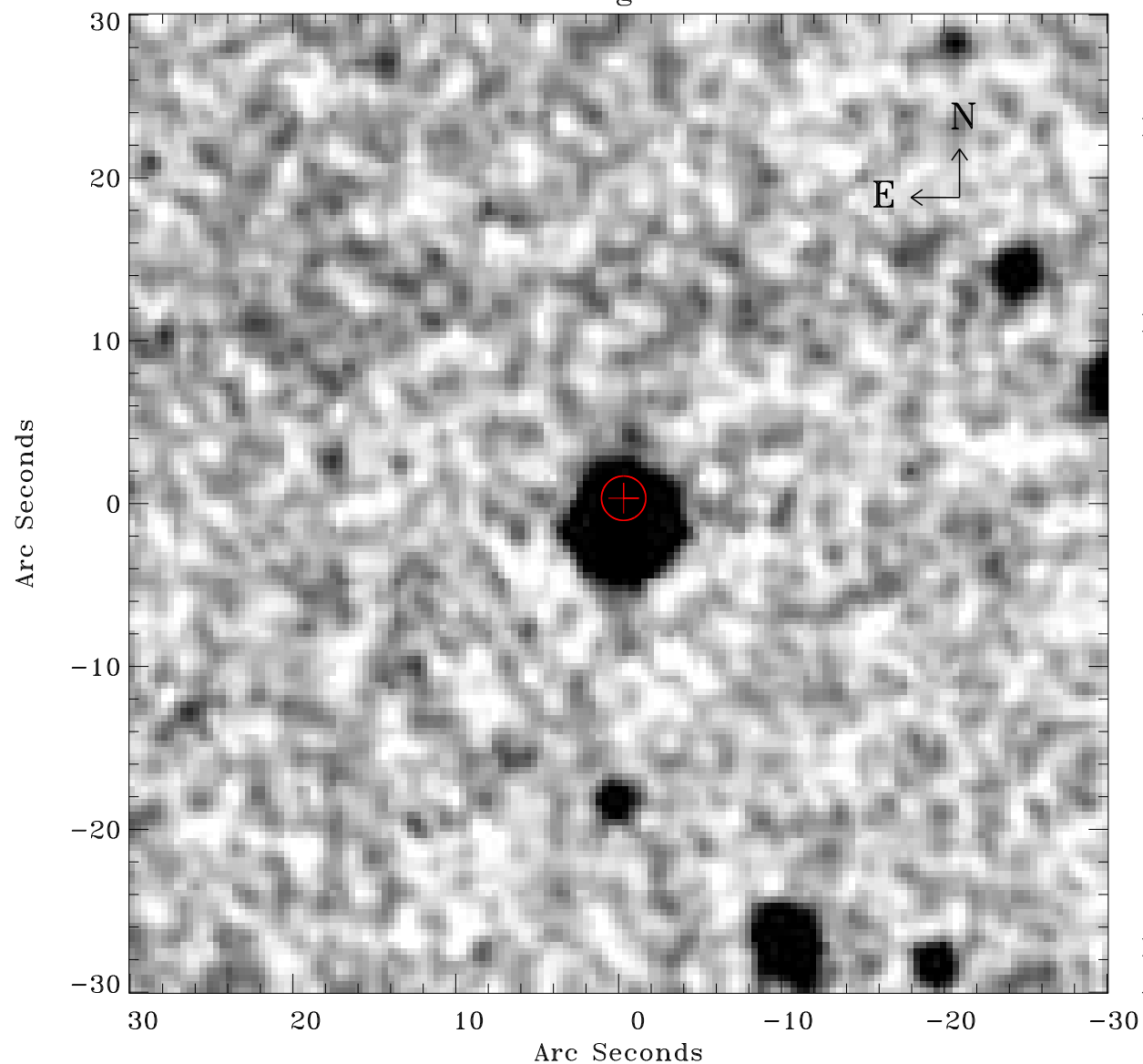


# EPIC source finding chart ACDS V10.0



Principal Investigator :

Dr Dacheng Lin

XMM target name :

2XMMi J184725-63172

OBS ID : 694610101

Source number : 9

X-ray coordinates :

$\alpha$  : 18 48 23.72

$\delta$  : -63 16 02.4

Center coordinates :

$\alpha$  : 18 48 23.70

$\delta$  : -63 16 02.3

Plate reference :

Origin : CDS HIPs Network

Plate : MAMA srcj

Pixel : 0.40 "/pix

Error circle :

$R_{90}$  (") : 1.3

XMM SSC

Apr 26 23:50:39 2019