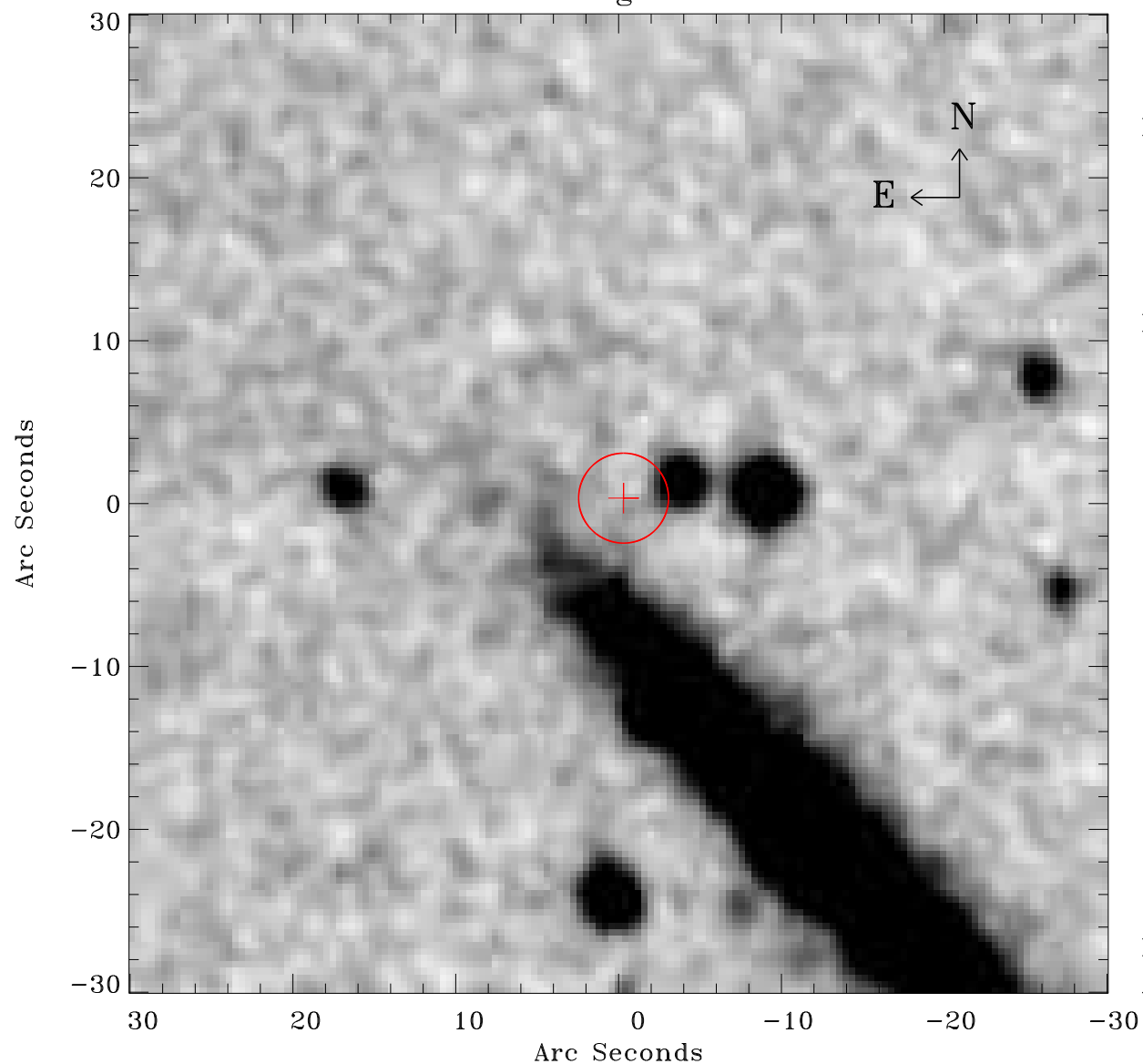


EPIC source finding chart ACDS V10.0



Principal Investigator :

Dr Dacheng Lin

XMM target name :

2XMMi J184725-63172

OBS ID : 694610101

Source number : 44

X-ray coordinates :

α : 18 48 24.26

δ : -63 12 42.0

Center coordinates :

α : 18 48 24.24

δ : -63 12 41.9

Plate reference :

Origin : CDS HIPs Network

Plate : MAMA srcj

Pixel : 0.40 "/pix

Error circle :

R_{90} (") : 2.7

XMM SSC

Apr 26 23:50:50 2019