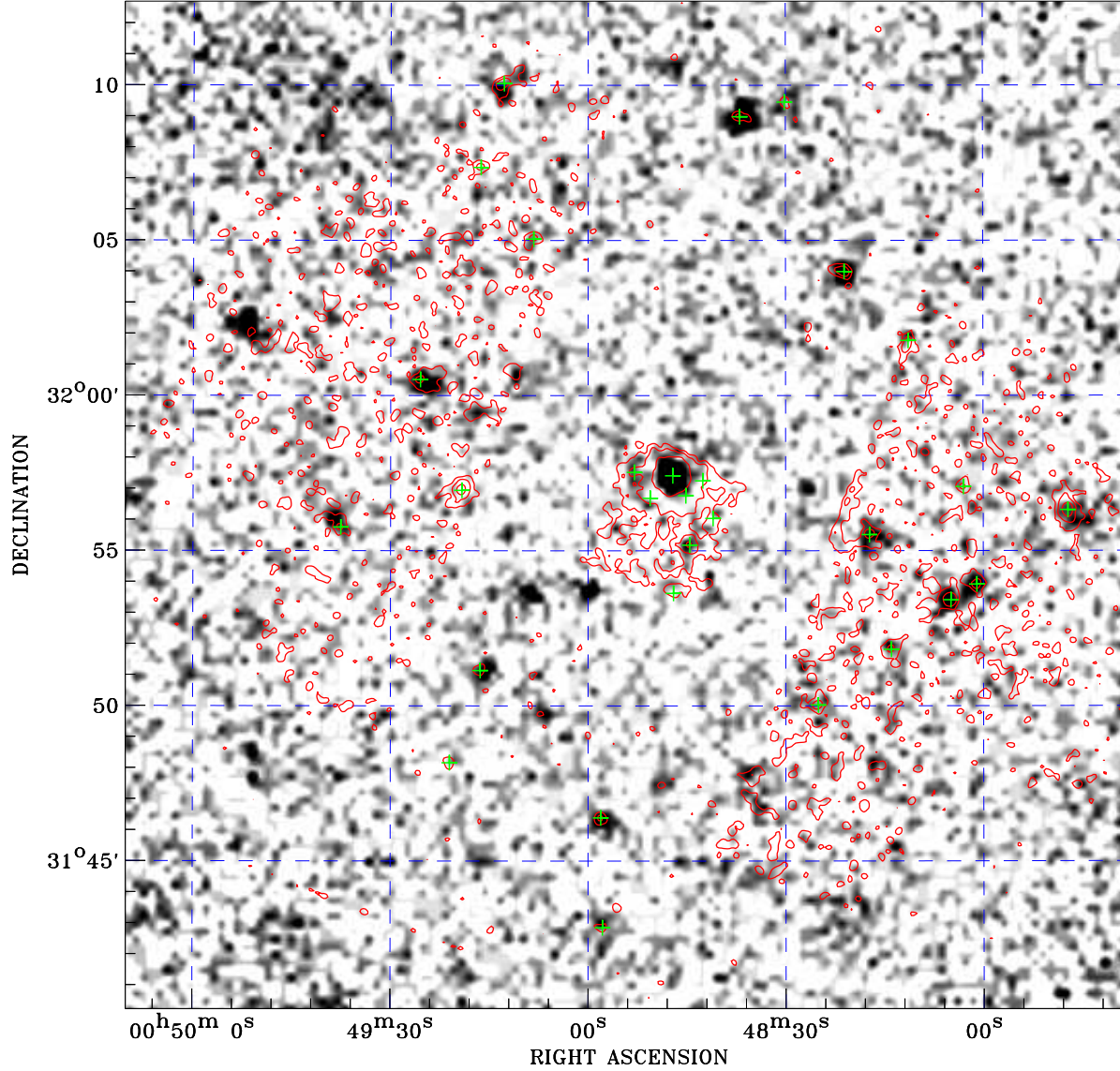


PDF XMM ROSAT image ACDS V10.0



Principal Investigator :
Dr Alex Markowitz

XMM target name :
Mkn 348

Observation ID :
0701180101

Epic image :
 α : 00 48 53.78
 δ : +31 56 28.9
 Energy band : 0.2–12.0 keV
 MOS1 : 12809 s
 MOS2 : 12814 s
 PN : 10563 s

Contour levels (counts) :
 2σ :3.929E-01 7σ :1.019E+00
 30σ :3.897E+00

Nearest ROSAT image
from Epic image center :
 Observation : 700331p
 Instrument : PSPCB
 α : 00 48 59.76
 δ : +31 54 35.7

Other ROSAT images :
None

XMM SSC
Feb 3 15:55:06 2025

⊙ Epic image contour
levels at 2, 7 and 30 σ

+ Detected Epic sources