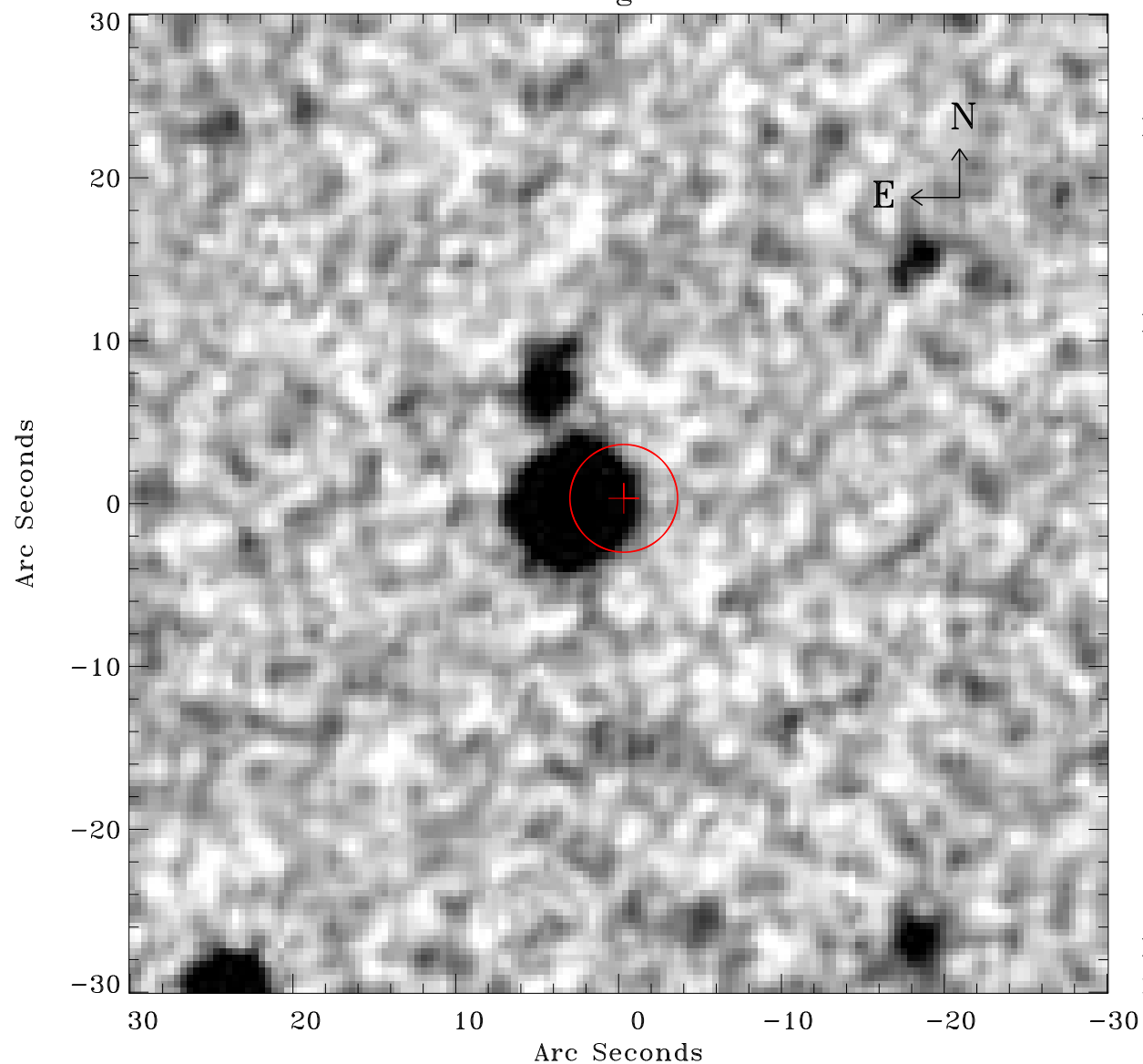


# EPIC source finding chart ACDS V10.0



Principal Investigator :

Prof Hans Boehringer

XMM target name :

RXCJ2242.8-6428

OBS ID : 720252201

Source number : 56

X-ray coordinates :

$\alpha$  : 22 41 55.03

$\delta$  : -64 33 28.5

Center coordinates :

$\alpha$  : 22 41 55.02

$\delta$  : -64 33 28.4

Plate reference :

Origin : CDS HIPs Network

Plate : MAMA srcj

Pixel : 0.40 "/pix

Error circle :

$R_{90}$  (") : 3.3

XMM SSC

May 2 01:32:48 2019