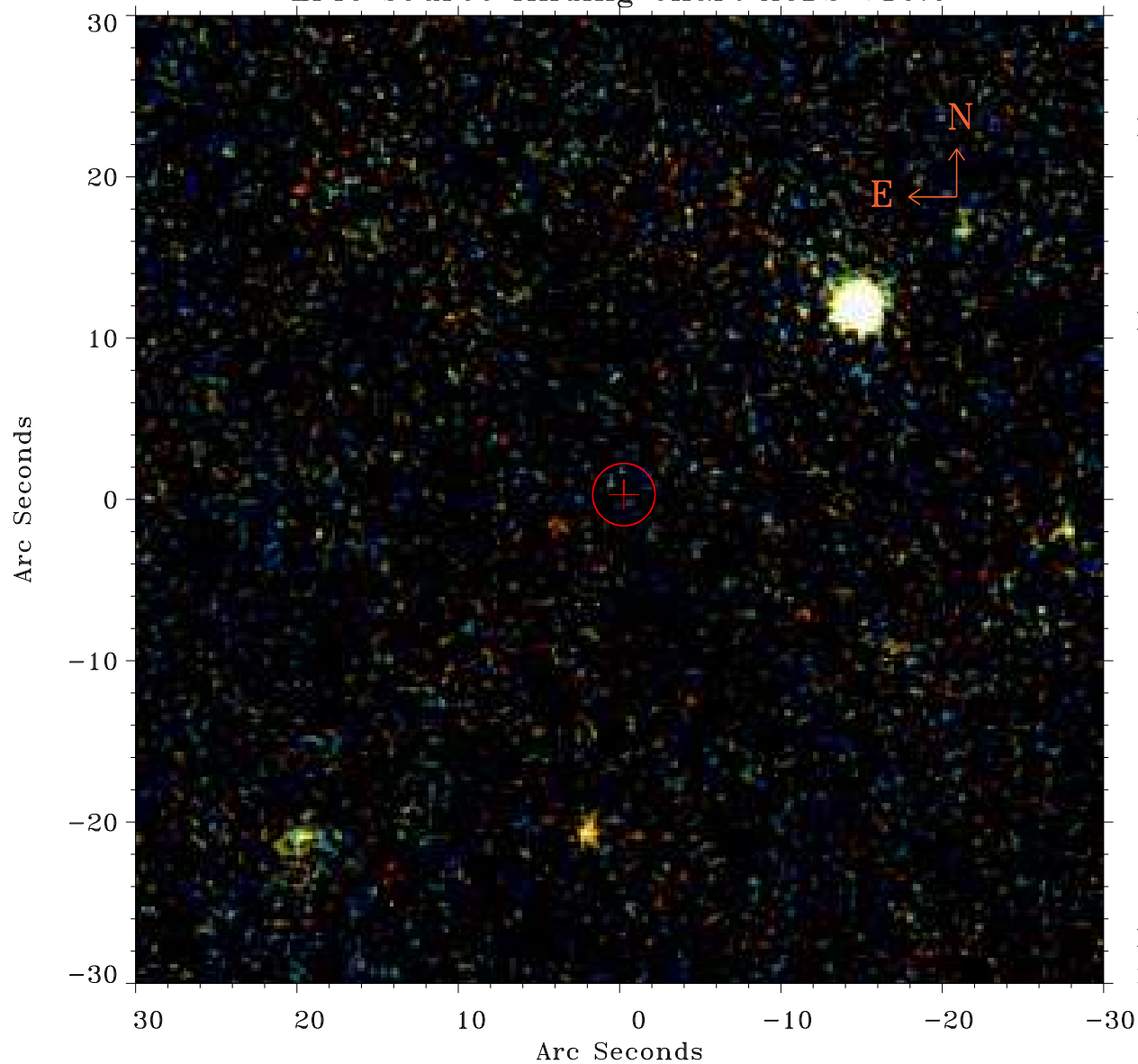


# EPIC source finding chart ACDS V10.0



Principal Investigator :  
Prof Albert Kong

XMM target name :  
2FGL J2339.6-0532

OBS ID : 721130101  
Source number : 78

X-ray coordinates :  
 $\alpha$  : 23 39 44.57  
 $\delta$  : -05 30 44.3

Center coordinates :  
 $\alpha$  : 23 39 44.57  
 $\delta$  : -05 30 44.4

Plate reference :  
Origin : PanSTARRS-DR1

Color coding :  
z band ●  
(z+g)/2 ●  
g band ●

Error:  
R90 : 1.9 arsec

XMM SSC  
May 2 05:19:42 2019