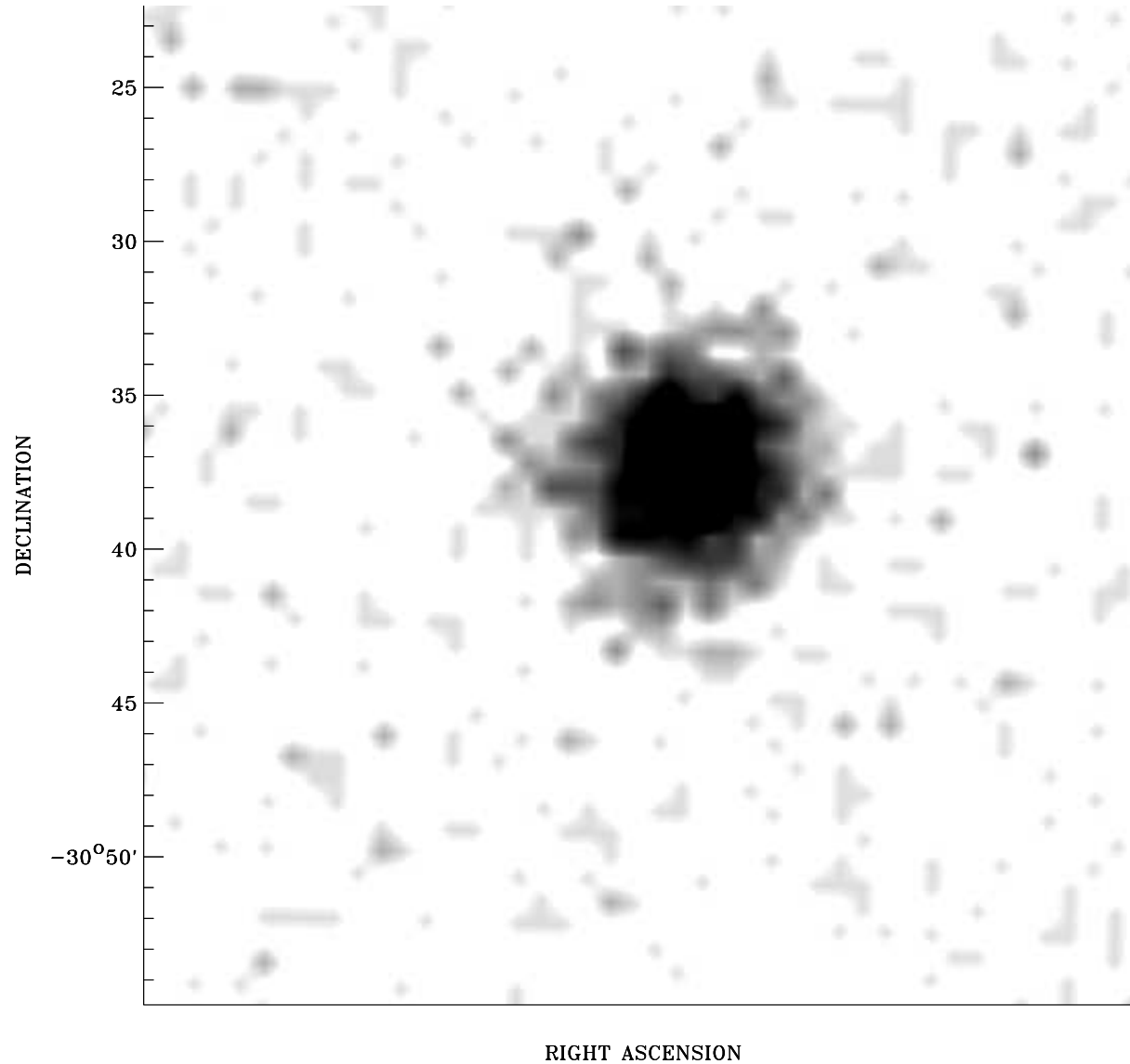


PDF XMM RASS image ACDS V10.0



Principal Investigator :
Dr Taotao Fang

XMM target name :
H 2356-309 +20

Observation ID :
0722860201

Epic image :
 α : 23 59 13.24
 δ : -30 38 36.0
Energy band : 0.2-12.0 keV
MOS1 : 79071 s
MOS2 : 91214 s
PN : 81282 s

Contour levels (counts) :
2 σ :6.693E+00 7 σ :2.043E+01
30 σ :8.362E+01

RASS image :
Observation : 932258p
Instrument : PSPCC
 α : 23 48 16.10
 δ : -28 16 30.4

XMM SSC
Apr 22 20:11:35 2019

RASS image gray scale (Log) :
1.658E-03 4.156E-02
(counts s⁻¹)

⊙ Epic image contour
levels at 2, 7 and 30 σ

+ Detected Epic sources