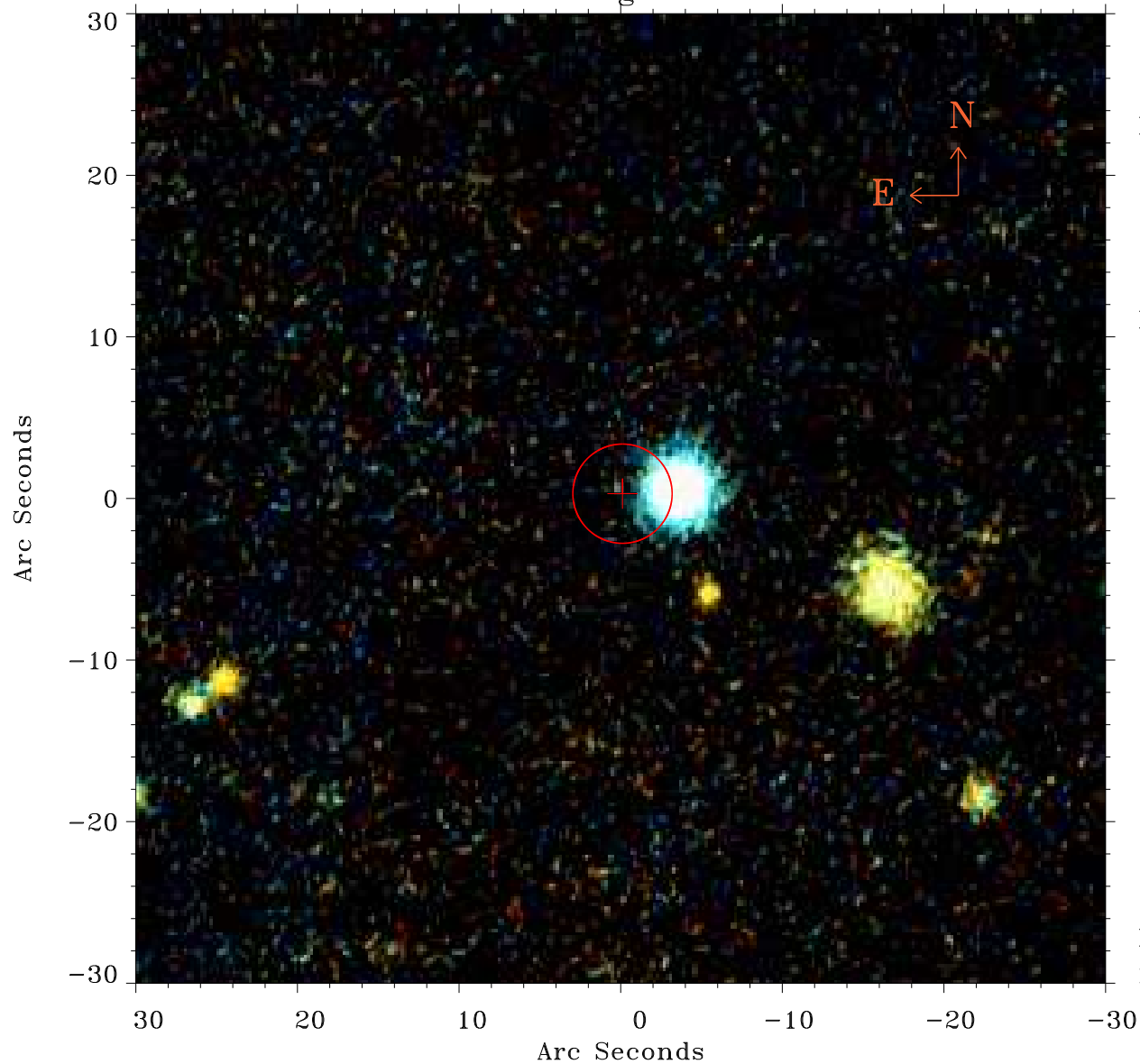


# EPIC source finding chart ACDS V10.0



Principal Investigator :

Dr Dacheng Lin

XMM target name :

SDSS J141711+522540

OBS ID : 723860101

Source number : 45

X-ray coordinates :

$\alpha$  : 14 16 42.82

$\delta$  : +52 18 12.2

Center coordinates :

$\alpha$  : 14 16 42.81

$\delta$  : +52 18 12.1

Plate reference :

Origin : PanSTARRS-DR1

Color coding :

z band ●

(z+g)/2 ●

g band ●

Error:

R90 : 3.1 arsec

XMM SSC

May 2 18:26:25 2019