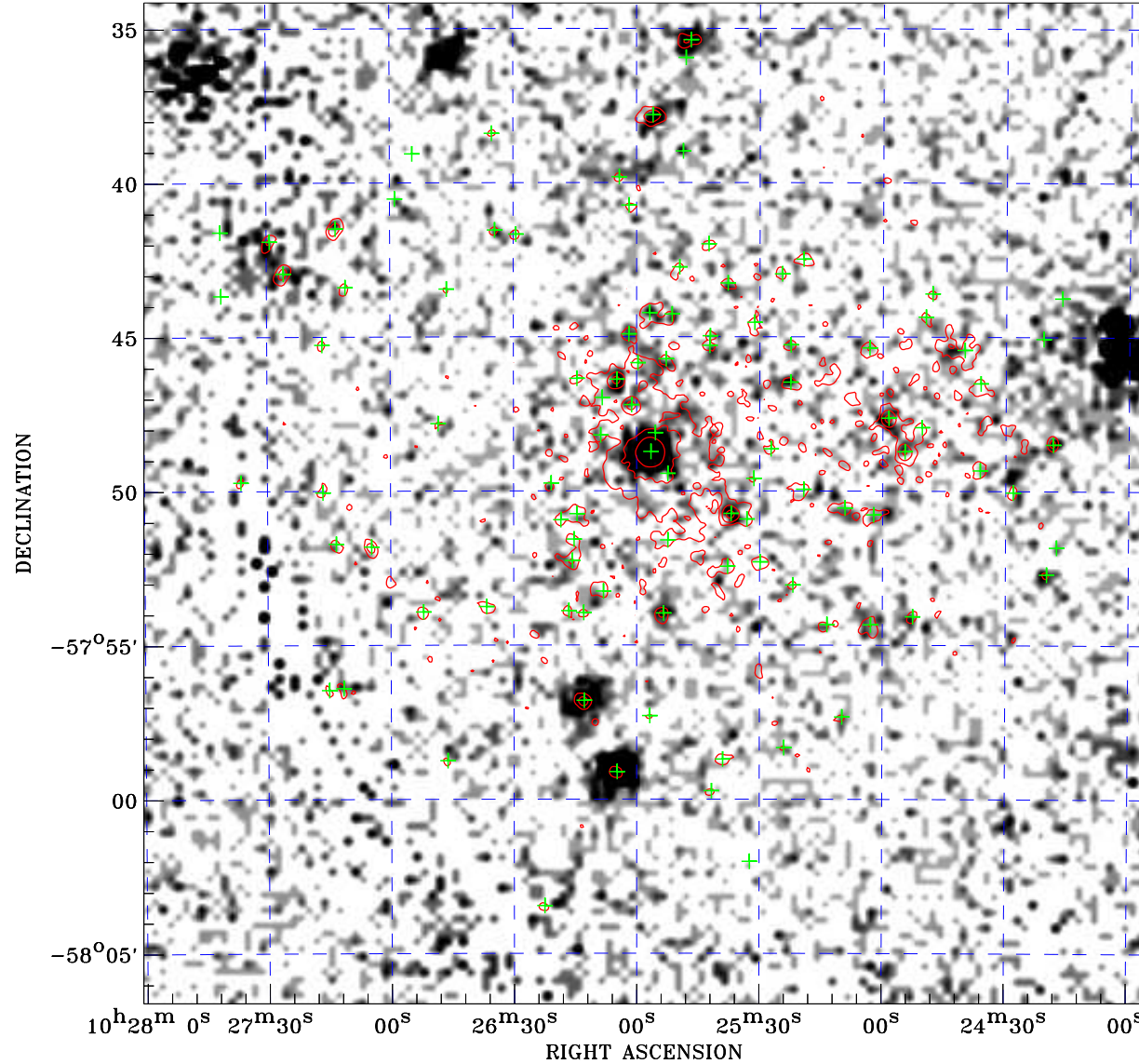


# PDF XMM ROSAT image ACDS V10.0



Principal Investigator :  
Dr Eric Gosset

XMM target name :  
WR 21a

Observation ID :  
0724190501

Epic image :  
 $\alpha$  : 10 25 58.17  
 $\delta$  : -57 50 24.6  
Energy band : 0.2-12.0 keV  
MOS1 : 23614 s  
MOS2 : 23618 s  
PN : 21331 s

Contour levels (counts) :  
 $2\sigma$  :2.099E+00  $7\sigma$  :4.974E+00  
 $30\sigma$  :1.820E+01

Nearest ROSAT image  
from Epic image center :  
Observation : 400329p  
Instrument : PSPCB  
 $\alpha$  : 10 25 20.17  
 $\delta$  : -57 49 48.1

Other ROSAT images :  
None

XMM SSC  
May 3 05:41:44 2019

ROSAT image gray scale (Log) :  
5.073E-05 3.624E-04  
(counts s<sup>-1</sup>)

⊙ Epic image contour  
levels at 2, 7 and 30 $\sigma$

+ Detected Epic sources