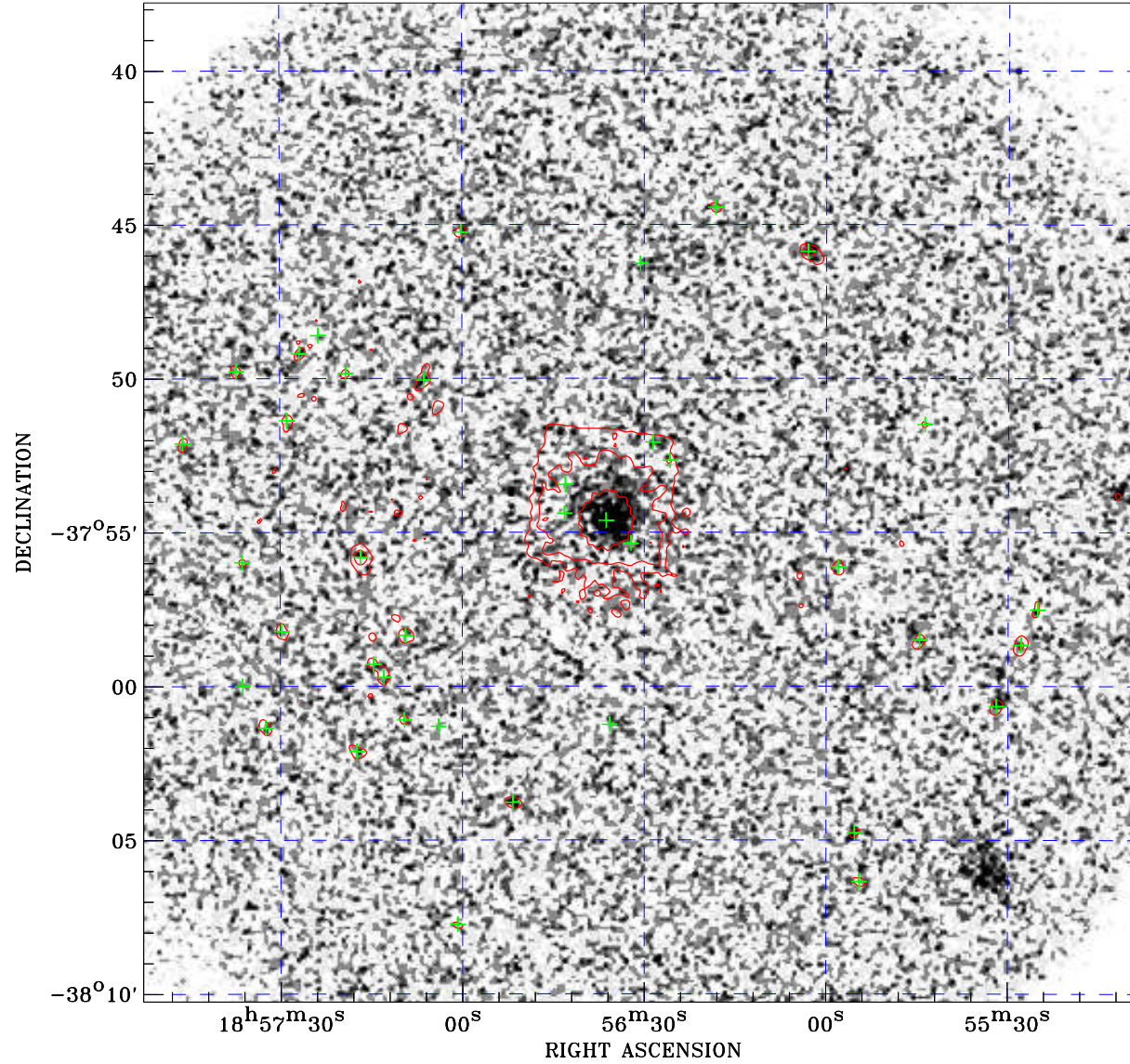



PDF XMM ROSAT image ACDS V10.0



ROSAT image gray scale (Log) :

 $\langle 4.922\text{E}-05$ $\rangle 2.486\text{E}-04$
 (counts s⁻¹)

⊙ Epic image contour
 levels at 2, 7 and 30 σ

+ Detected Epic sources

Principal Investigator :
 Dr Fred Jansen XMM-Newton MM

XMM target name :
 RXJ1856.6-3754

Observation ID :
 0727761301

Epic image :
 α : 18 56 30.16
 δ : -37 54 02.3
 Energy band : 0.2-12.0 keV
 MOS1 : 42860 s
 MOS2 : 46266 s
 PN : 37714 s

Contour levels (counts) :
 2 σ :3.226E+00 7 σ :8.701E+00
 30 σ :3.389E+01

Nearest ROSAT image
 from Epic image center :
 Observation : 400612h
 Instrument : HRI
 α : 18 56 44.09
 δ : -37 56 12.2

Other ROSAT images :
 None

XMM SSC
 Apr 19 08:05:21 2019