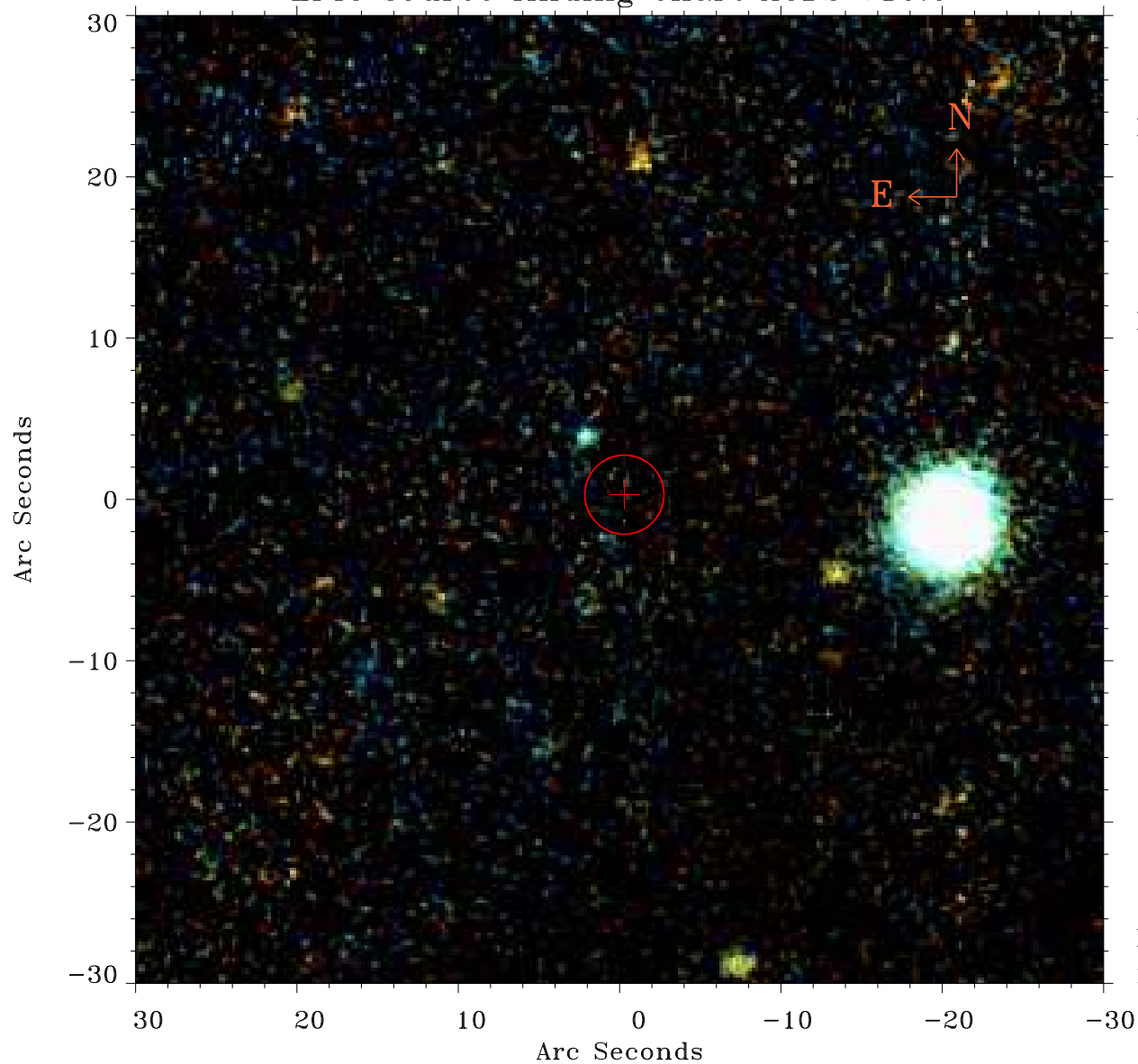


EPIC source finding chart ACDS V10.0



Principal Investigator :

Dr Marco Ajello

XMM target name :

2FGL J0022.2-1853

OBS ID : 740820501

Source number : 48

X-ray coordinates :

α : 00 21 56.49

δ : -18 53 18.1

Center coordinates :

α : 00 21 56.49

δ : -18 53 18.2

Plate reference :

Origin : PanSTARRS-DR1

Color coding :

z band ●

(z+g)/2 ●

g band ●

Error:

R90 : 2.4 arsec

XMM SSC

May 3 21:57:38 2019