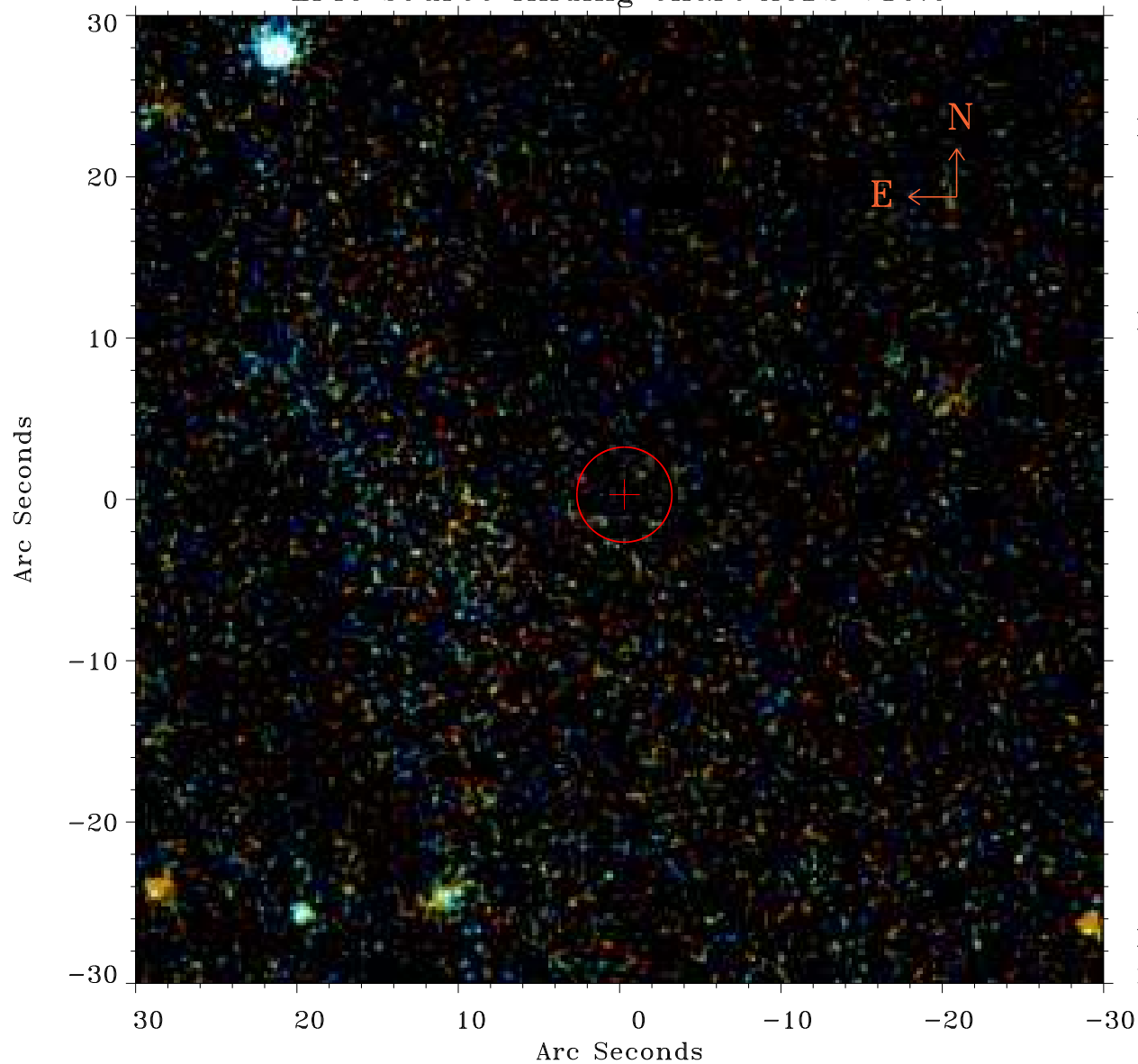


# EPIC source finding chart ACDS V10.0



Principal Investigator :

Dr Marco Ajello

XMM target name :

2FGL J0022.2-1853

OBS ID : 740820501

Source number : 69

X-ray coordinates :

$\alpha$  : 00 21 25.71

$\delta$  : -18 48 21.9

Center coordinates :

$\alpha$  : 00 21 25.71

$\delta$  : -18 48 22.0

Plate reference :

Origin : PanSTARRS-DR1

Color coding :

z band ●

(z+g)/2 ●

g band ●

Error:

R90 : 2.9 arsec

XMM SSC

May 3 21:56:03 2019