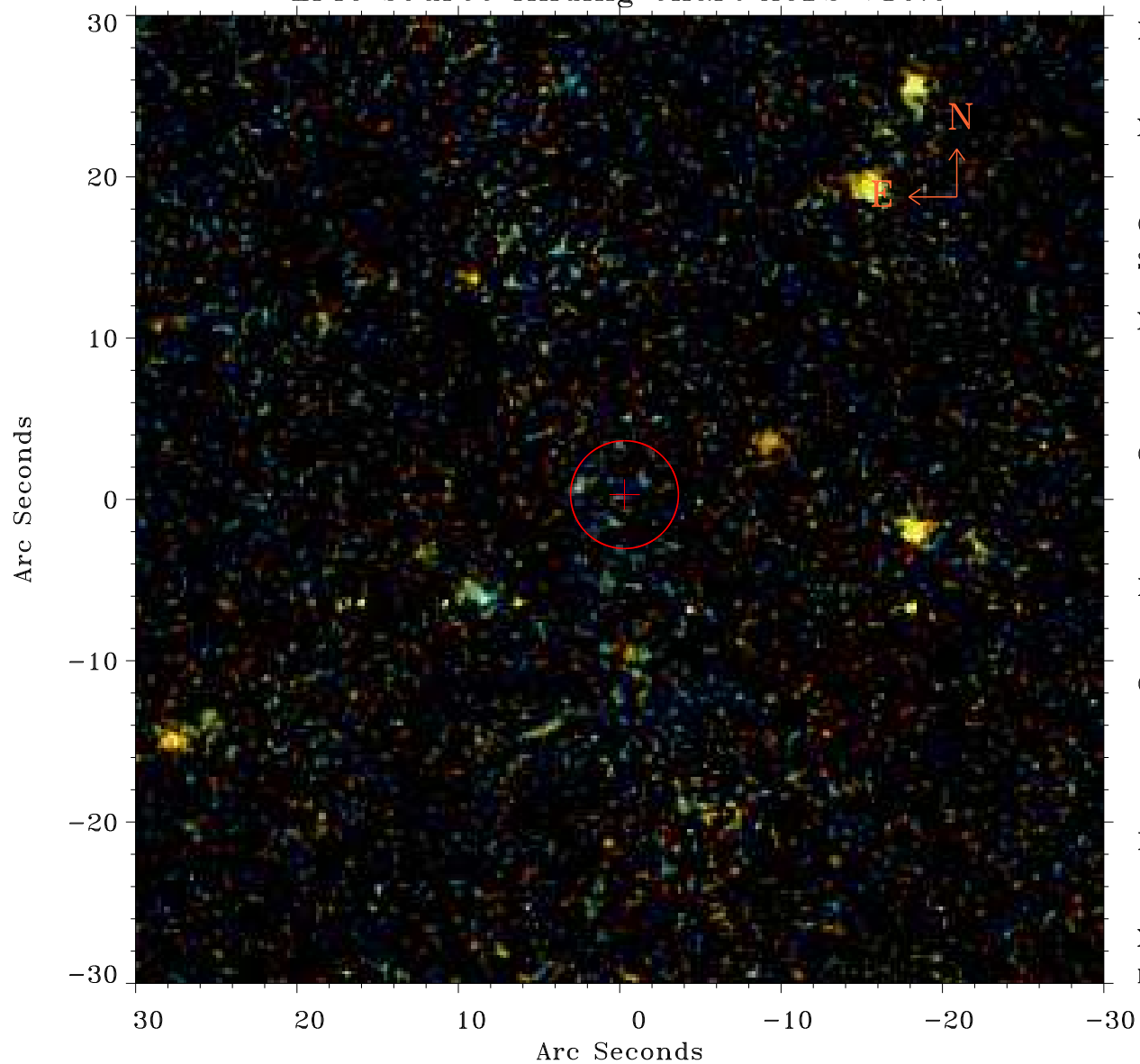


# EPIC source finding chart ACDS V10.0



Principal Investigator :

Dr Marco Ajello

XMM target name :

2FGL J0022.2-1853

OBS ID : 740820501

Source number : 78

X-ray coordinates :

$\alpha$  : 00 22 04.82

$\delta$  : -18 46 44.8

Center coordinates :

$\alpha$  : 00 22 04.82

$\delta$  : -18 46 44.9

Plate reference :

Origin : PanSTARRS-DR1

Color coding :

z band ●

(z+g)/2 ●

g band ●

Error:

R90 : 3.3 arcsec

XMM SSC

May 3 21:58:28 2019