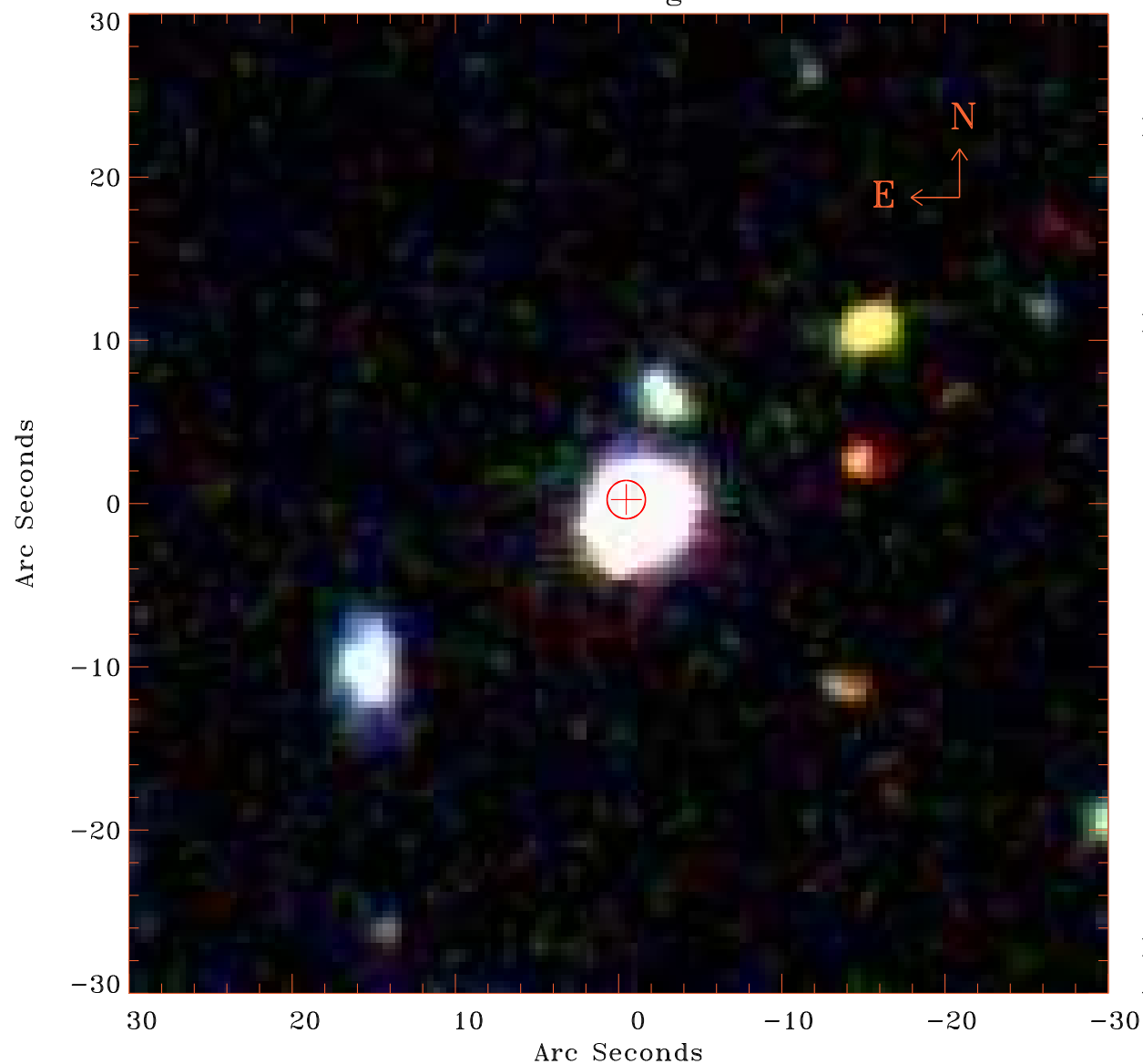


EPIC source finding chart V10.0



Principal Investigator :
Prof Martin Hardcastle

XMM target name :
SDSS112023.23+54042

OBS ID : 741031301
Source number : 2

X-ray coordinates :
 α : 11 21 08.78
 δ : +53 51 21.6

Center coordinates :
 α : 11 21 08.79
 δ : +53 51 21.7

Plate reference :
Origin : SDSS

Color coding :
i band ●
r band ●
g band ●

Error circle :
 R_{90} (") : 1.2

XMM SSC
Apr 26 05:11:20 2019