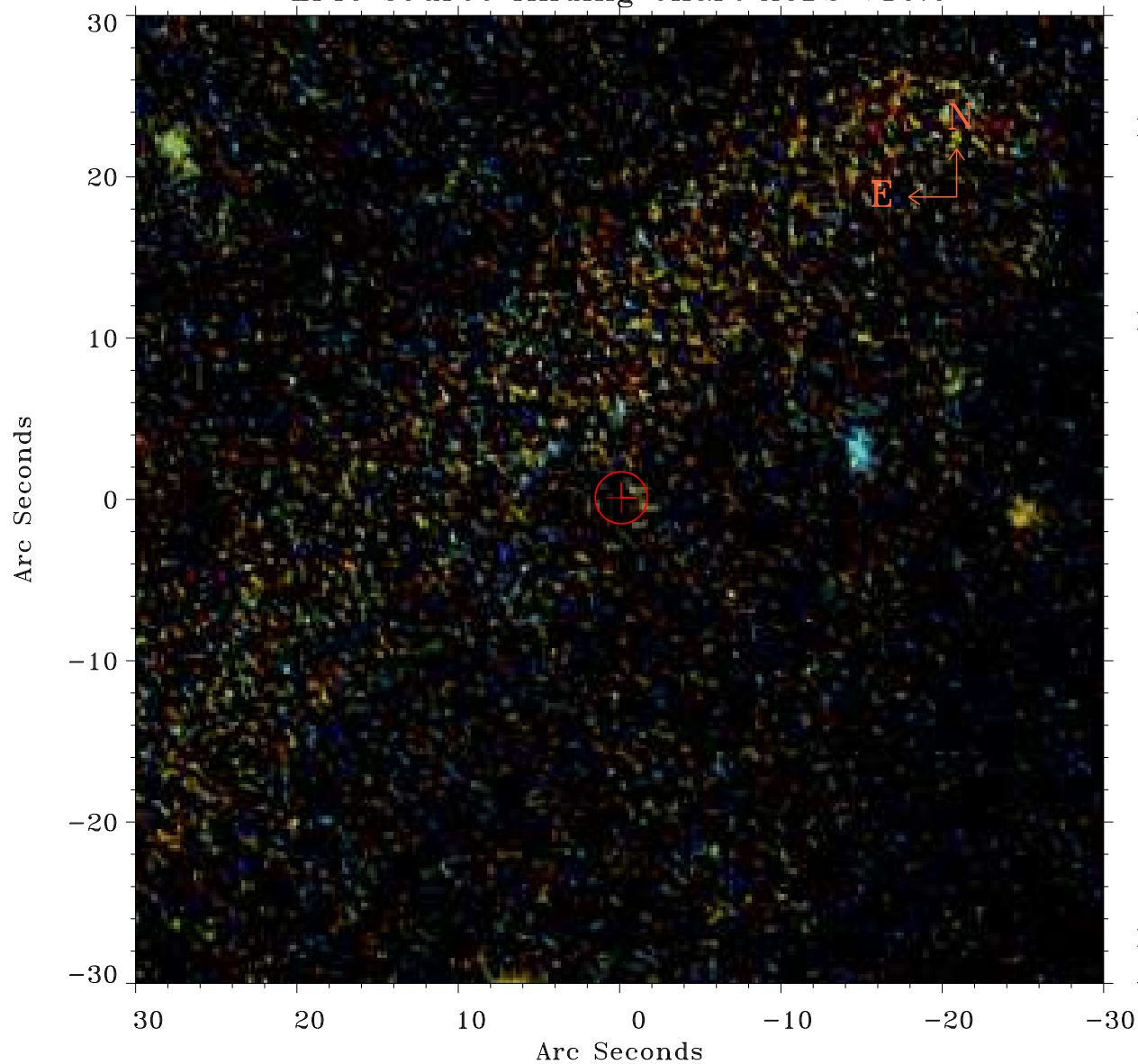


# EPIC source finding chart ACDS V10.0



Principal Investigator :

Prof Martin Hardcastle

XMM target name :

SDSS112023.23+54042

OBS ID : 741031301

Source number : 7

X-ray coordinates :

$\alpha$  : 11 20 20.22

$\delta$  : +54 12 58.3

Center coordinates :

$\alpha$  : 11 20 20.21

$\delta$  : +54 12 58.4

Plate reference :

Origin : PanSTARRS-DR1

Color coding :

z band ●

(z+g)/2 ●

g band ●

Error:

R90 : 1.6 arsec

XMM SSC

Apr 26 05:14:09 2019