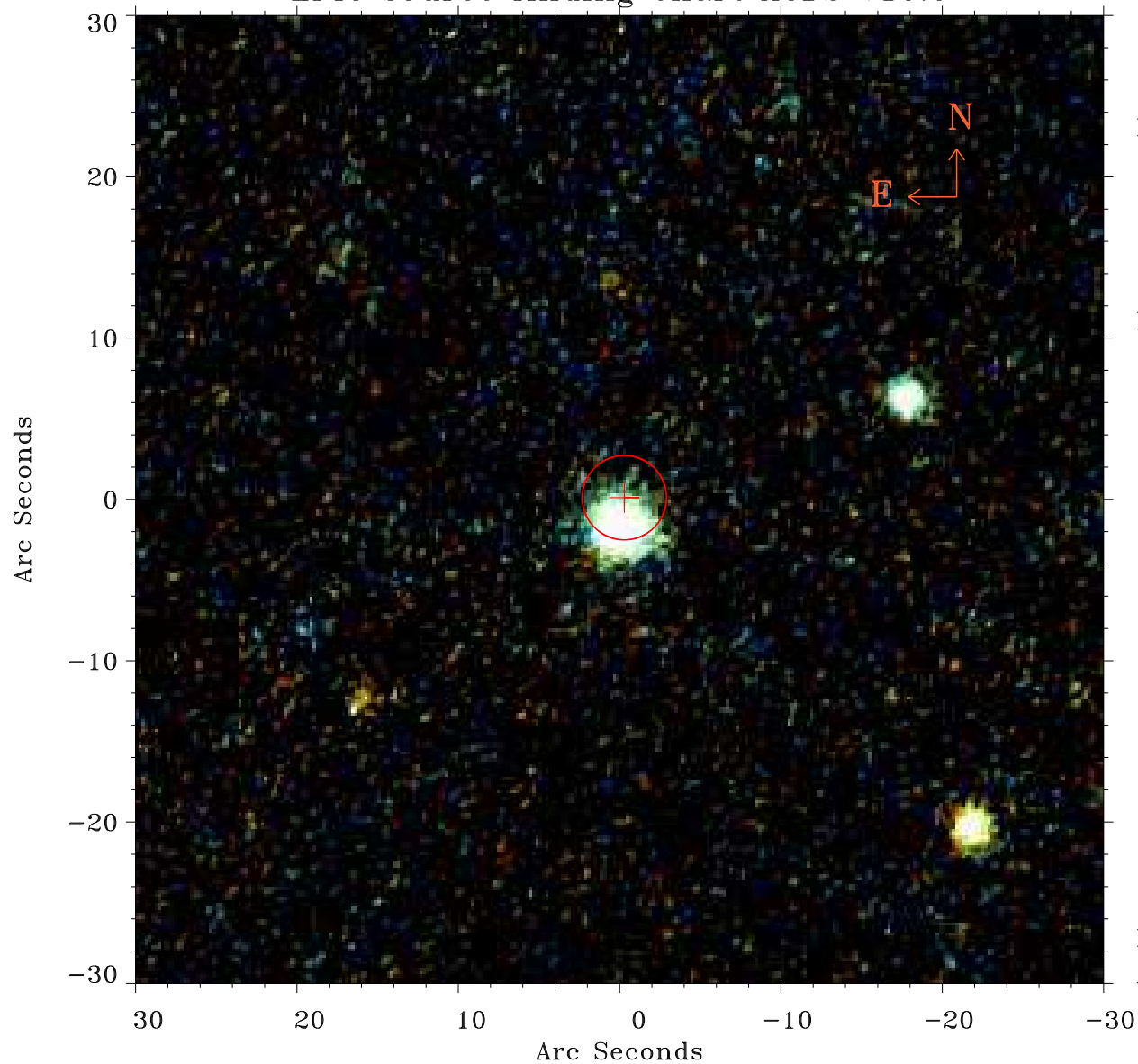


EPIC source finding chart ACDS V10.0



Principal Investigator :

Prof Martin Hardcastle

XMM target name :

SDSS125139.05+54275

OBS ID : 741031501

Source number : 10

X-ray coordinates :

α : 12 50 08.02

δ : +54 23 38.2

Center coordinates :

α : 12 50 08.03

δ : +54 23 38.3

Plate reference :

Origin : PanSTARRS-DR1

Color coding :

z band ●

(z+g)/2 ●

g band ●

Error:

R90 : 2.6 arcsec

XMM SSC

Apr 20 18:16:07 2019