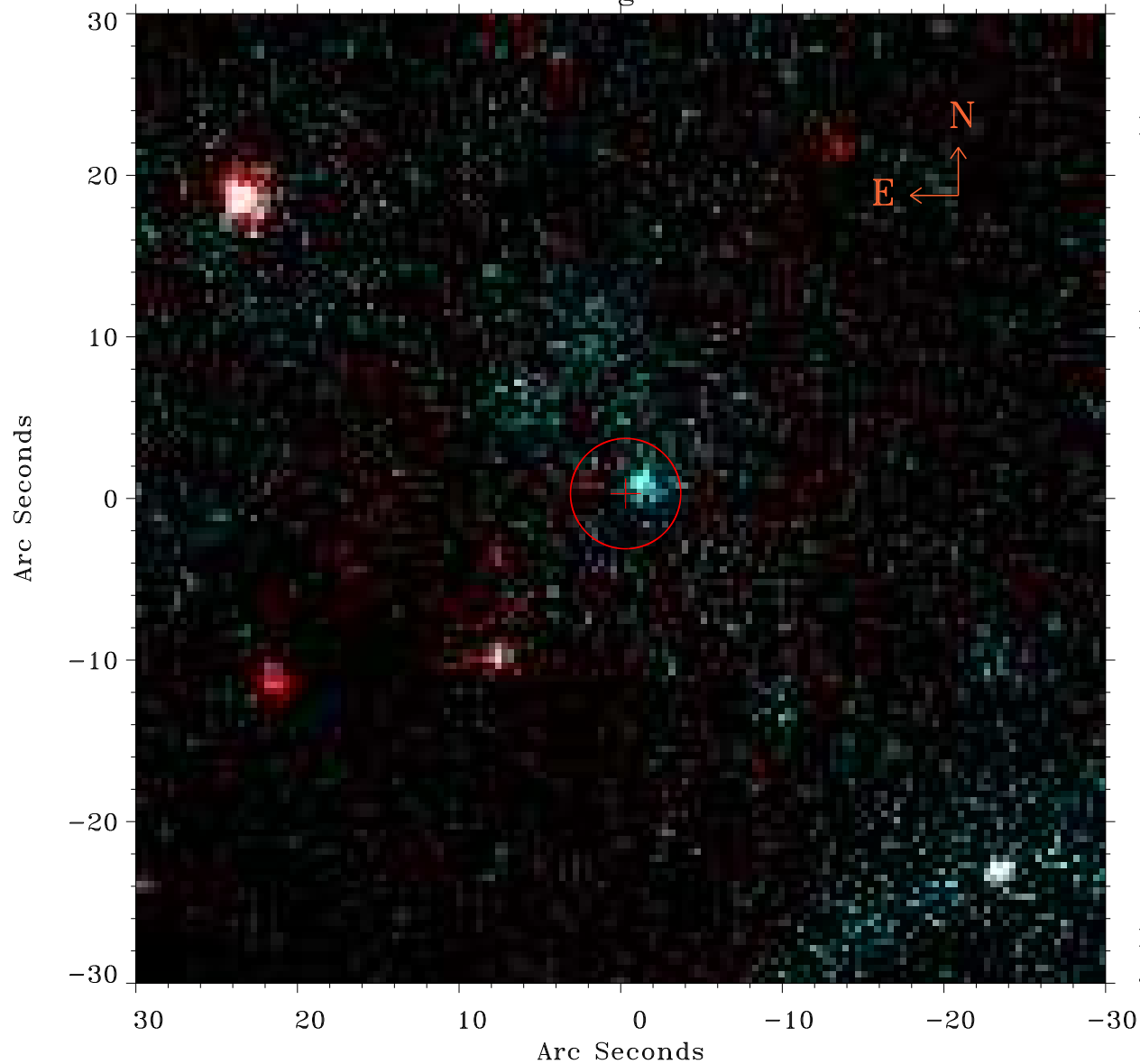


# EPIC source finding chart ACDS V10.0



Principal Investigator :  
Prof Martin Hardcastle

XMM target name :  
SDSS125139.05+54275

OBS ID : 741031501  
Source number : 15

X-ray coordinates :  
 $\alpha$  : 12 50 34.02  
 $\delta$  : +54 20 47.8

Center coordinates :  
 $\alpha$  : 12 50 34.01  
 $\delta$  : +54 20 47.9

Plate reference :  
Origin : PanSTARRS-DR1

Color coding :  
z band ●  
(z+g)/2 ●  
g band ●

Error:  
R90 : 3.4 arcsec

XMM SSC  
Jan 19 06:54:53 2025