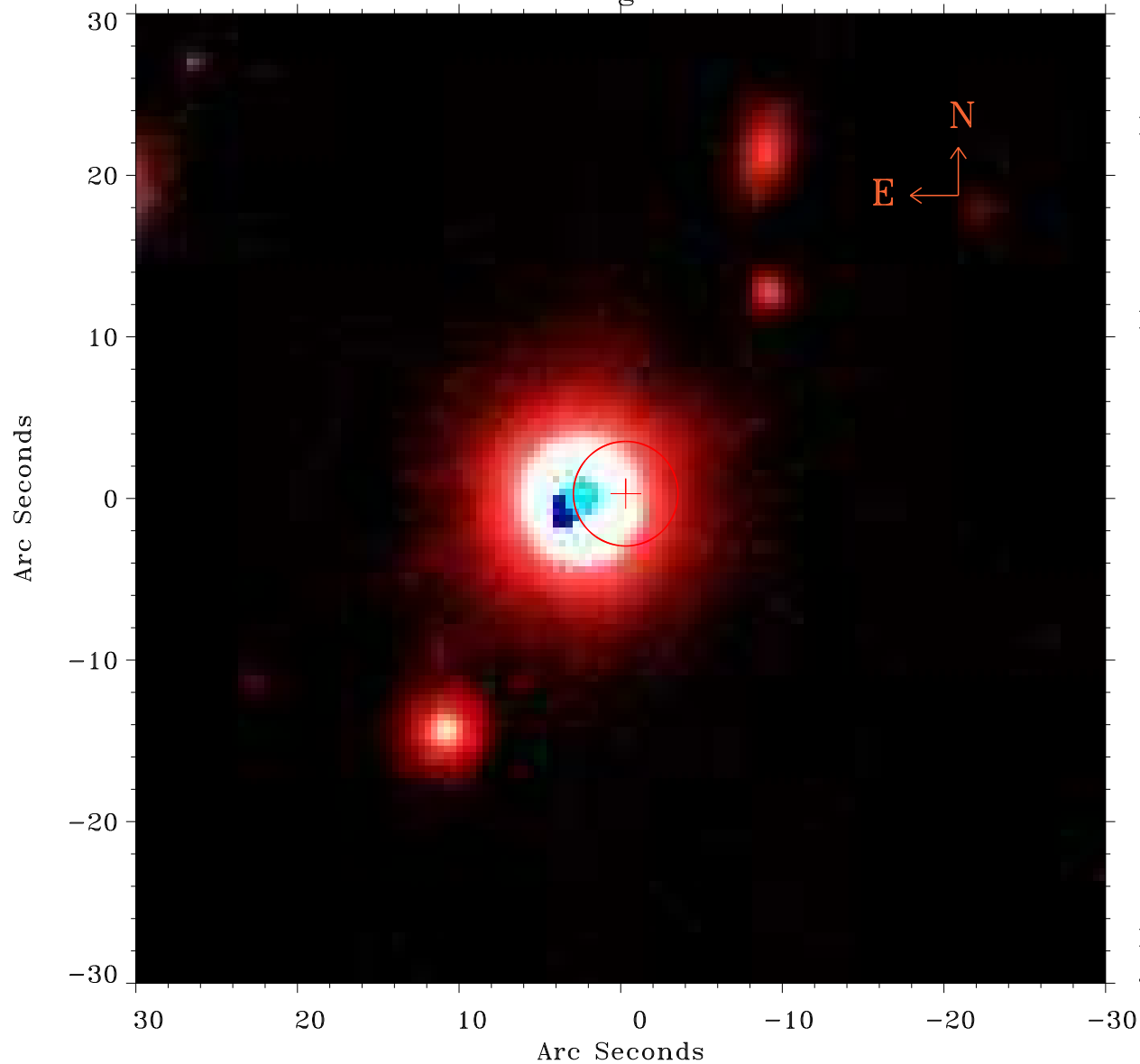


# EPIC source finding chart ACDS V10.0



Principal Investigator :

Prof Martin Hardcastle

XMM target name :

SDSS125139.05+54275

OBS ID : 741031501

Source number : 17

X-ray coordinates :

$\alpha$  : 12 52 21.32

$\delta$  : +54 25 17.5

Center coordinates :

$\alpha$  : 12 52 21.31

$\delta$  : +54 25 17.6

Plate reference :

Origin : PanSTARRS-DR1

Color coding :

z band ●

(z+g)/2 ●

g band ●

Error:

R90 : 3.2 arsec

XMM SSC

Jan 19 07:01:43 2025