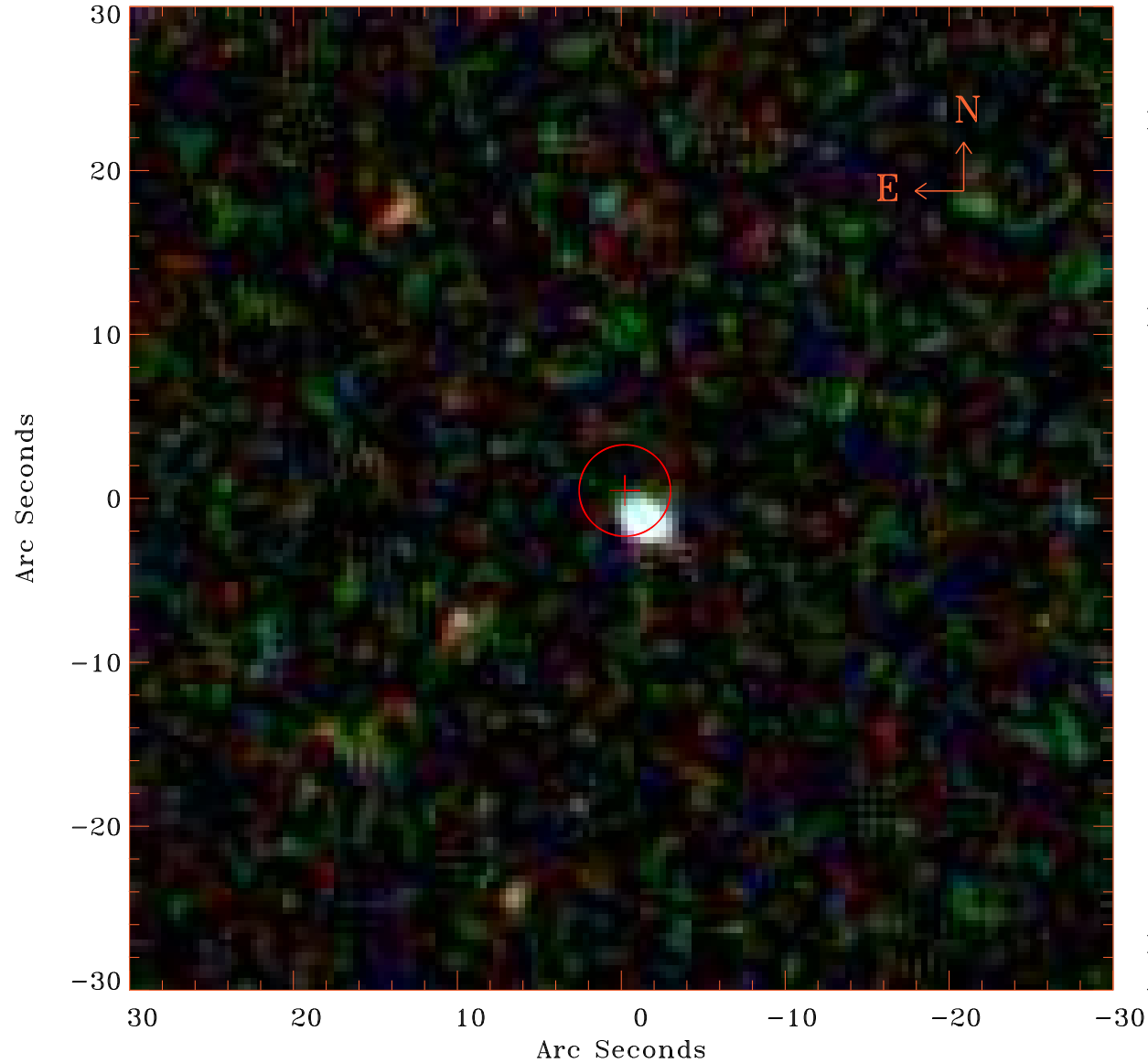


EPIC source finding chart V10.0



Principal Investigator :

Prof Martin Hardcastle

XMM target name :

SDSS125139.05+54275

OBS ID : 741031501

Source number : 12

X-ray coordinates :

α : 12 50 35.15

δ : +54 38 34.8

Center coordinates :

α : 12 50 35.13

δ : +54 38 34.7

Plate reference :

Origin : SDSS

Color coding :

i band ●

r band ●

g band ●

Error circle :

R_{90} (") : 2.8

XMM SSC

Apr 20 18:15:02 2019