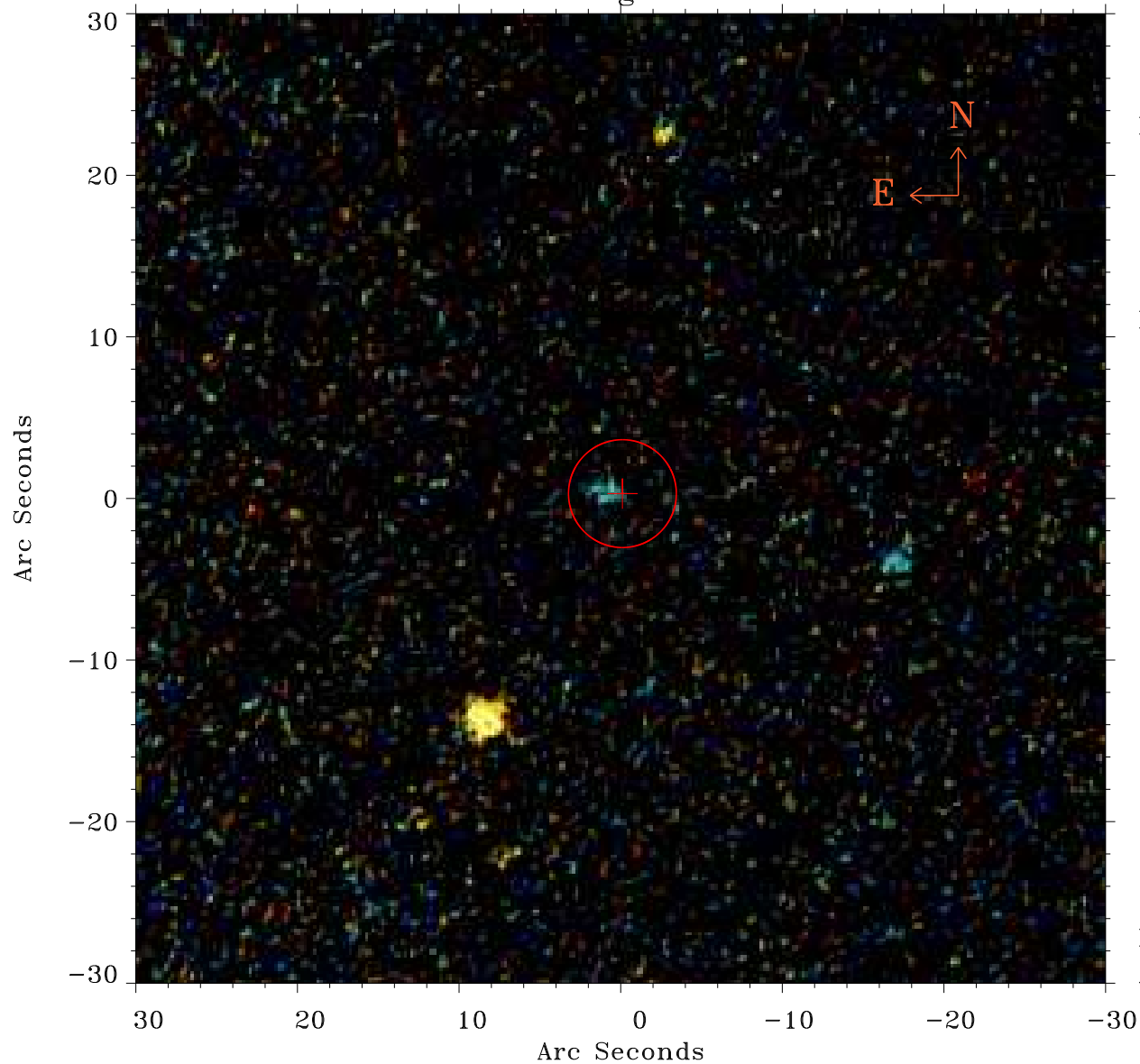


# EPIC source finding chart ACDS V10.0



Principal Investigator :

Prof Martin Hardcastle

XMM target name :

SDSS125139.05+54275

OBS ID : 741031501

Source number : 18

X-ray coordinates :

$\alpha$  : 12 52 55.84

$\delta$  : +54 29 49.0

Center coordinates :

$\alpha$  : 12 52 55.83

$\delta$  : +54 29 48.9

Plate reference :

Origin : PanSTARRS-DR1

Color coding :

z band ●

(z+g)/2 ●

g band ●

Error:

R90 : 3.3 arcsec

XMM SSC

Apr 20 18:17:43 2019