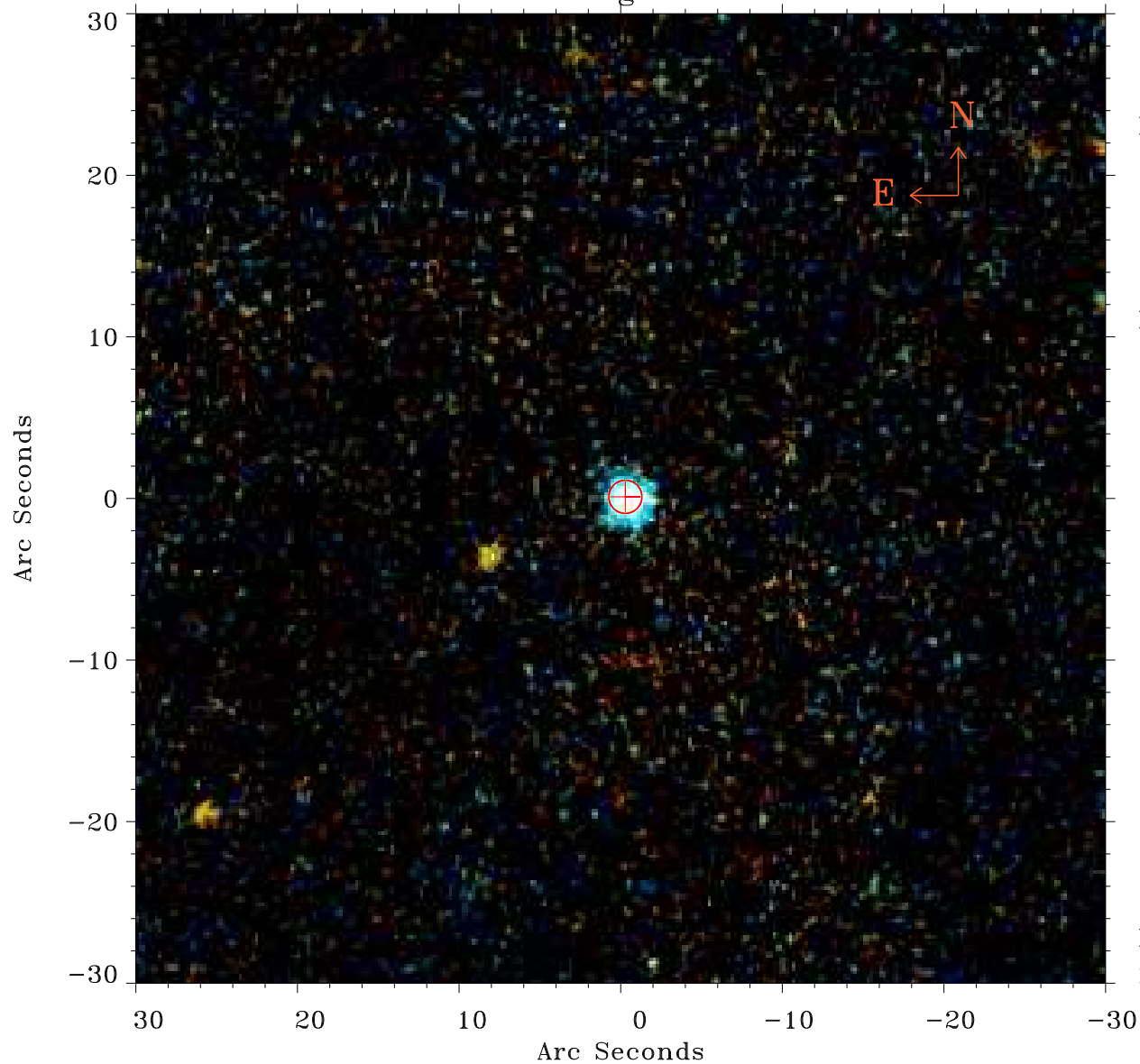


EPIC source finding chart ACDS V10.0



Principal Investigator :

Prof Martin Hardcastle

XMM target name :

SDSS165943.08+37542

OBS ID : 741033501

Source number : 2

X-ray coordinates :

α : 16 59 43.11

δ : +37 54 22.8

Center coordinates :

α : 16 59 43.12

δ : +37 54 22.9

Plate reference :

Origin : PanSTARRS-DR1

Color coding :

z band ●

(z+g)/2 ●

g band ●

Error:

R90 : 1.0 arsec

XMM SSC

May 2 21:22:29 2019