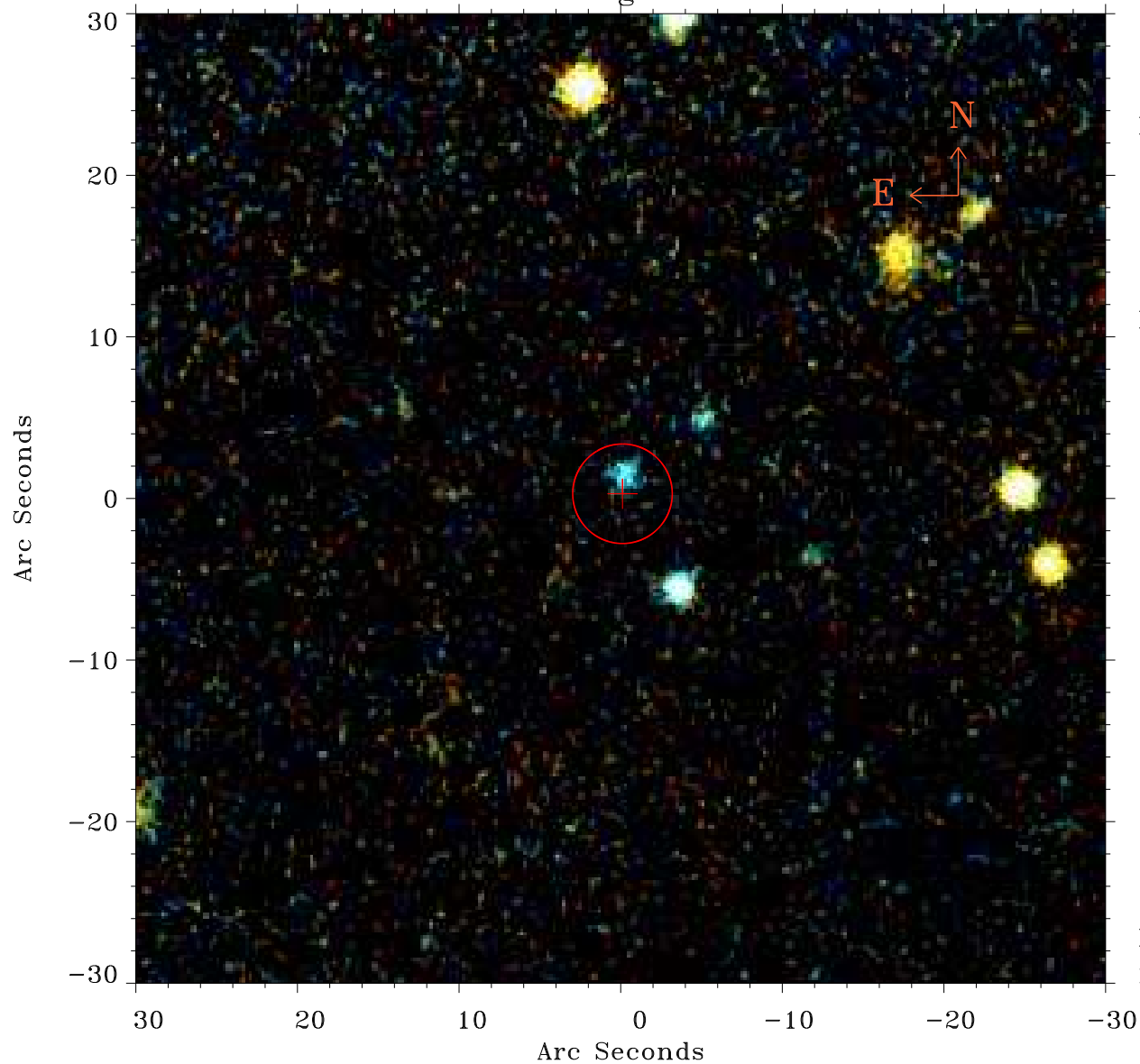


# EPIC source finding chart ACDS V10.0



Principal Investigator :

Prof Martin Hardcastle

XMM target name :

SDSS165943.08+37542

OBS ID : 741033501

Source number : 25

X-ray coordinates :

$\alpha$  : 16 59 40.27

$\delta$  : +37 59 39.9

Center coordinates :

$\alpha$  : 16 59 40.26

$\delta$  : +37 59 39.8

Plate reference :

Origin : PanSTARRS-DR1

Color coding :

z band ●

(z+g)/2 ●

g band ●

Error:

R90 : 3.1 arsec

XMM SSC

May 2 21:22:21 2019