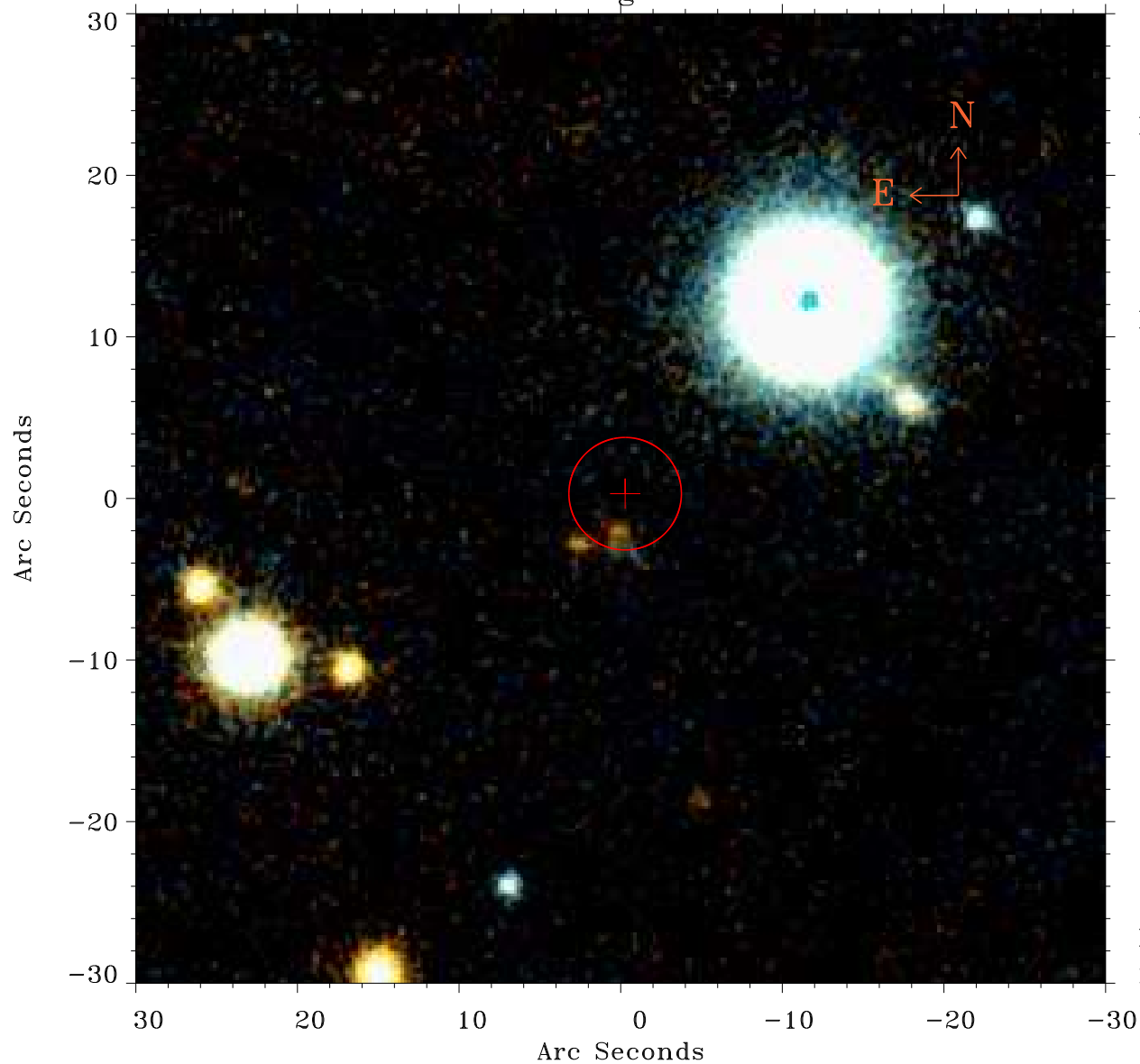


# EPIC source finding chart ACDS V10.0



Principal Investigator :

Prof Martin Hardcastle

XMM target name :

SDSS165943.08+37542

OBS ID : 741033501

Source number : 28

X-ray coordinates :

$\alpha$  : 17 00 48.50

$\delta$  : +37 53 50.2

Center coordinates :

$\alpha$  : 17 00 48.51

$\delta$  : +37 53 50.1

Plate reference :

Origin : PanSTARRS-DR1

Color coding :

z band ●

(z+g)/2 ●

g band ●

Error:

R90 : 3.5 arsec

XMM SSC

May 2 21:24:10 2019