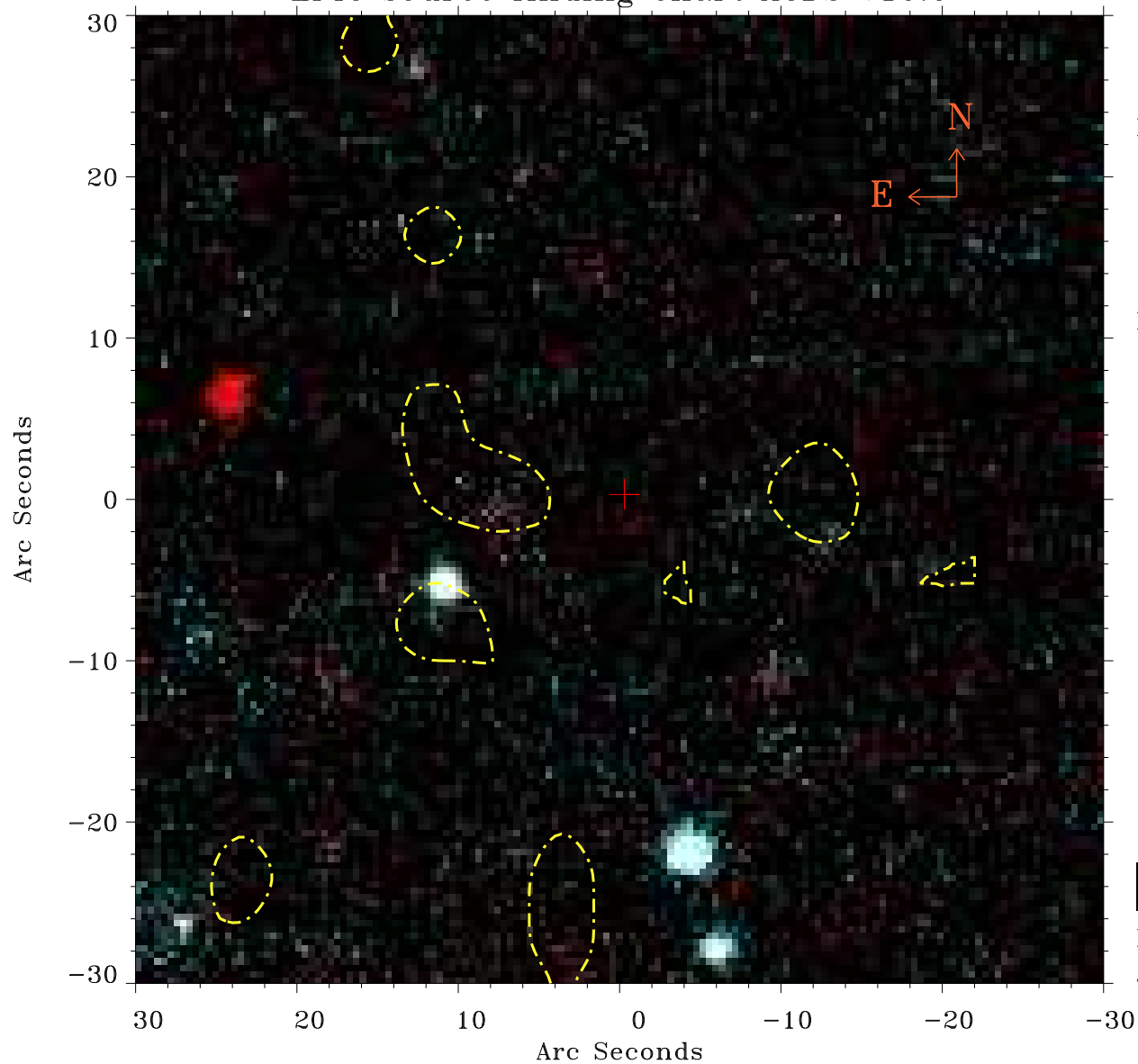


# EPIC source finding chart ACDS V10.0



Principal Investigator :

Prof Martin Hardcastle

XMM target name :

SDSS165943.08+37542

OBS ID : 741033501

Source number : 33

X-ray coordinates :

$\alpha$  : 17 00 14.31

$\delta$  : +37 54 29.9

Center coordinates :

$\alpha$  : 17 00 14.30

$\delta$  : +37 54 30.0

Plate reference :

Origin : PanSTARRS-DR1

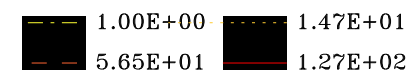
Color coding :

z band ●

(z+g)/2 ●

g band ●

Contour levels (counts) :



XMM SSC

Jan 19 08:15:12 2025