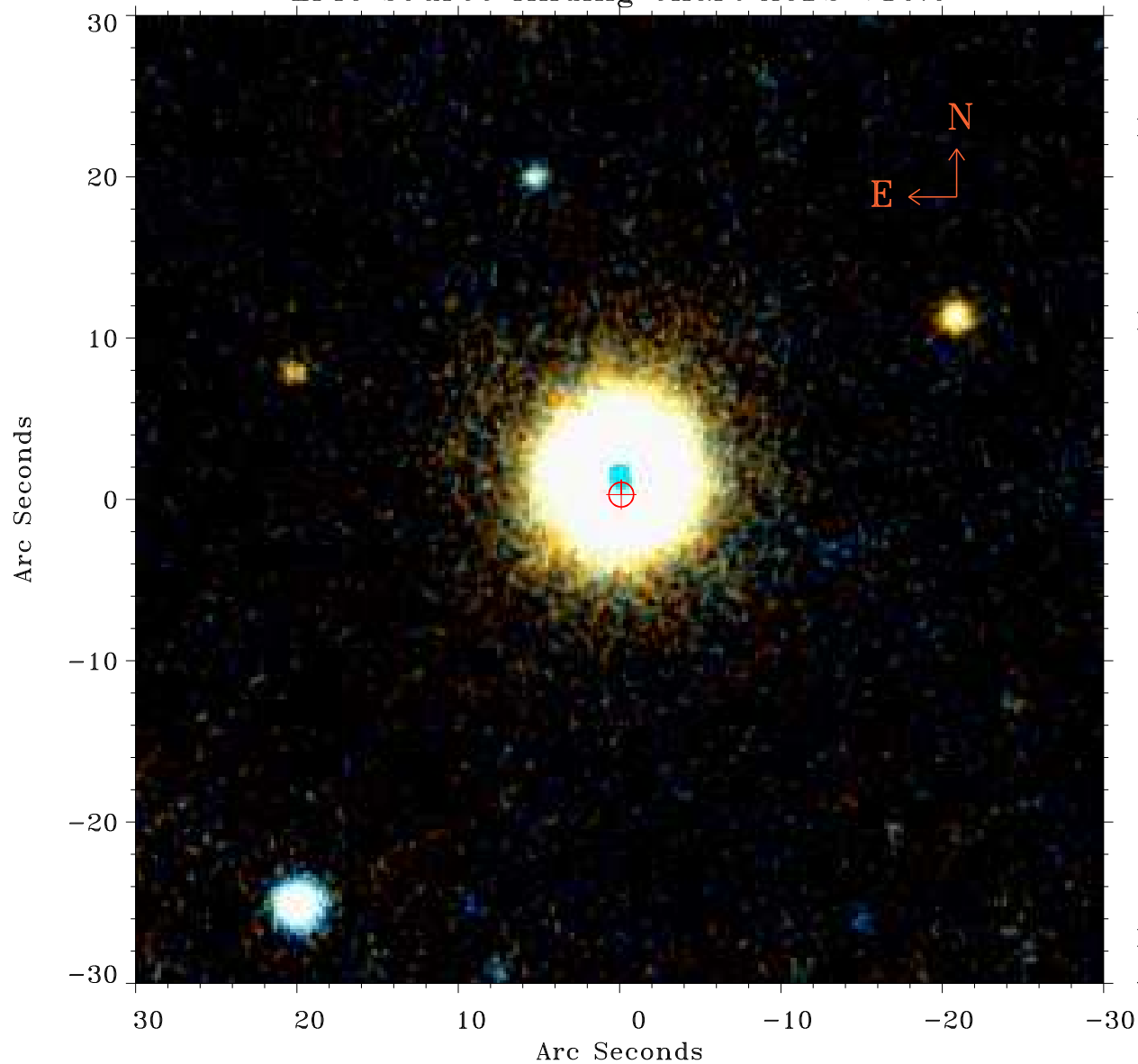


# EPIC source finding chart ACDS V10.0



Principal Investigator :

Dr Jiangtao Li

XMM target name :

NGC 5908

OBS ID : 741300101

Source number : 6

X-ray coordinates :

$\alpha$  : 15 17 12.89

$\delta$  : +55 28 31.6

Center coordinates :

$\alpha$  : 15 17 12.88

$\delta$  : +55 28 31.5

Plate reference :

Origin : PanSTARRS-DR1

Color coding :

z band ●

(z+g)/2 ●

g band ●

Error:

R90 : 0.8 arsec

XMM SSC

Apr 29 04:30:06 2019