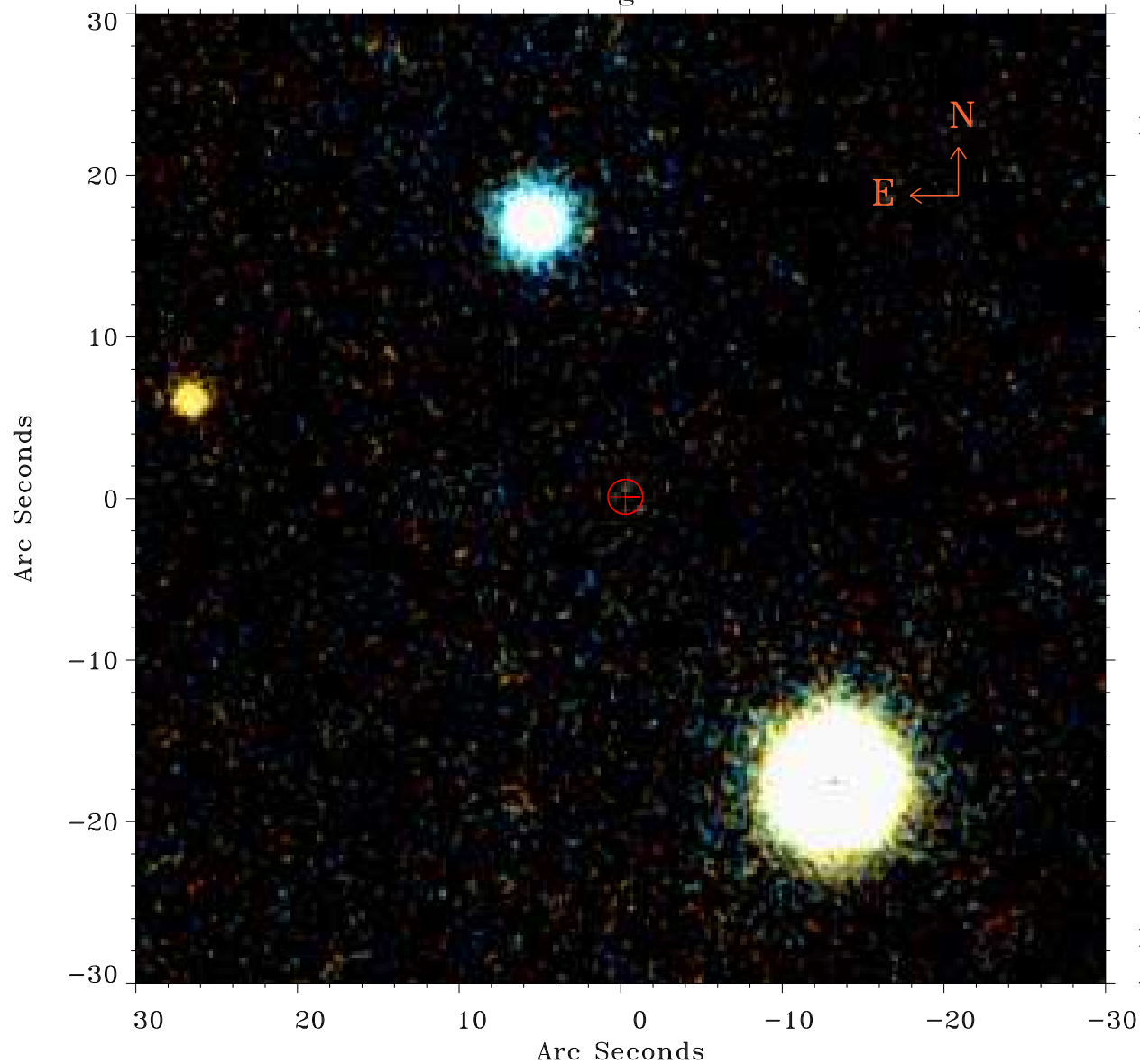


# EPIC source finding chart ACDS V10.0



Principal Investigator :

Dr Jiangtao Li

XMM target name :

NGC 5908

OBS ID : 741300101

Source number : 31

X-ray coordinates :

$\alpha$  : 15 16 53.02

$\delta$  : +55 27 59.5

Center coordinates :

$\alpha$  : 15 16 53.03

$\delta$  : +55 27 59.6

Plate reference :

Origin : PanSTARRS-DR1

Color coding :

z band ●

(z+g)/2 ●

g band ●

Error:

R90 : 1.1 arcsec

XMM SSC

Apr 29 04:28:40 2019