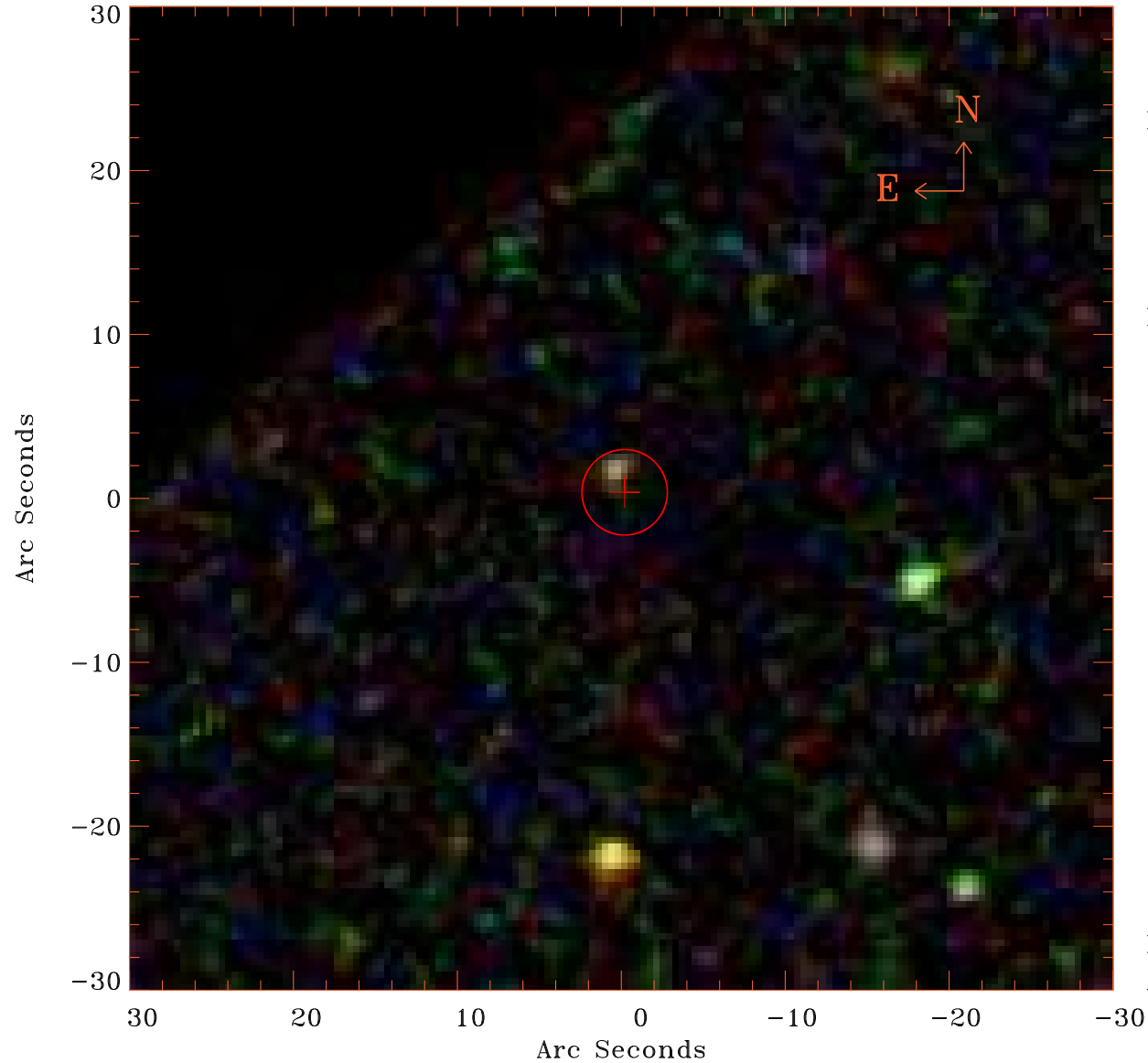


# EPIC source finding chart V10.0



Principal Investigator :

Dr Jiangtao Li

XMM target name :

NGC 5908

OBS ID : 741300101

Source number : 140

X-ray coordinates :

$\alpha$  : 15 17 41.45

$\delta$  : +55 30 25.2

Center coordinates :

$\alpha$  : 15 17 41.43

$\delta$  : +55 30 25.3

Plate reference :

Origin : SDSS

Color coding :

i band ●

r band ●

g band ●

Error circle :

$R_{90}$  (") : 2.6

XMM SSC

Apr 29 04:17:09 2019