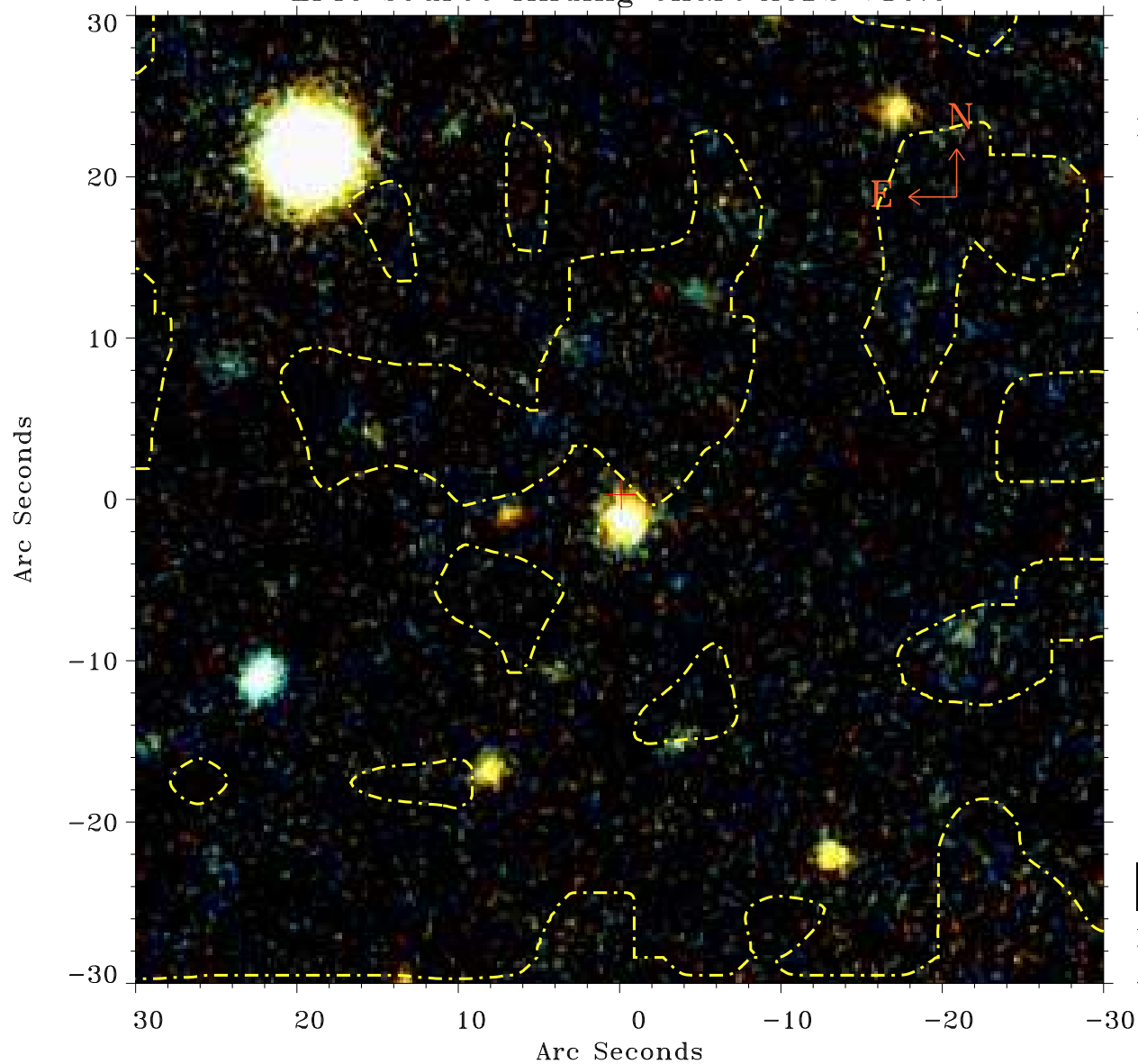


# EPIC source finding chart ACDS V10.0



Principal Investigator :

Dr Jiangtao Li

XMM target name :

NGC 5908

OBS ID : 741300101

Source number : 150

X-ray coordinates :

$\alpha$  : 15 15 56.07

$\delta$  : +55 25 21.3

Center coordinates :

$\alpha$  : 15 15 56.06

$\delta$  : +55 25 21.2

Plate reference :

Origin : PanSTARRS-DR1

Color coding :

z band ●

(z+g)/2 ●

g band ●

Contour levels (counts) :



XMM SSC

Apr 29 04:22:39 2019